



SUFFOLK
Community
Foundation

ANNUAL REPORT
2024

Making Suffolk a better place
TOGETHER

TOGETHER WE SUPPORT:
Aspect Living

suffolkcf.org.uk

About us

Established in 2005, Suffolk Community Foundation has become, with the generous philanthropy of so many, the largest independent grantmaker in the county.

We encourage and work with those who can give back to Suffolk, whether they are businesses, the public sector, families or individuals. With the funds under our care and together with other donors, we encourage charitable organisations and community groups to apply for grants.

As a large rural county, Suffolk has pockets of inequality and significant deprivation. Our aim is to improve the quality of life in Suffolk, to support those in difficulty and to tackle a wide range of issues. These could include homelessness, mental wellbeing, domestic abuse, digital exclusion or loneliness and isolation.

Our four priority areas are:

- Health & Wellbeing
- Poverty
- Inequality & Equity
- Environment & Climate Change

Our vision

To help make Suffolk a better place for all.

Our mission

To be a Community Foundation for everyone, helping charities and people across the whole county, whilst facilitating and encouraging giving from different sources.

Our values

- We are ambitious for our county.
- We are clear and transparent.
- We act with integrity, kindness and compassion.

TOGETHER WE SUPPORT:
Abbeycroft Leisure

In 2023/24 our partnerships with private donors, local businesses, public sector and independent trusts and foundations have delivered

£3.4m

in grant funding to address needs in Suffolk.

Welcome from our Chair, George Vestey DL

It gives me great pleasure to present Suffolk Community Foundation's Annual Report and Financial Statements for the year ended 30 June 2024.

The past year has brought further challenges as public sector funding has again decreased while the need for support has continued to rise. To help address this, we have focussed on helping the most vulnerable members of our community by supporting charities which are finding sustainable and innovative ways to alleviate poverty, improve health and wellbeing and tackle inequalities. We are proud that we were able to award £3.4m to 415 charities and community groups during the year, in turn cementing our position as the largest independent grantmaker in Suffolk. As always, none of this would have been possible without the kindness and generosity of our donors, and we remain incredibly grateful for their ongoing support.

In addition to our existing initiatives, the last 12 months have seen the launch of the Sizewell C Community Fund. The scheme will run for the next decade and is making £23m available to projects taking place in the East Suffolk Council area that reduce the impact of, or build on the opportunities created by, the construction of Sizewell C. We are pleased that we have been chosen to manage the fund and use our skills and expertise to ensure this significant sum of money reaches the areas where it will make the biggest difference.



The past year has also seen internal change at the Foundation as we have welcomed Helen Taylor and Louise Long to our Board of Trustees. At the same time, Anna Hughes withdrew from her role as trustee to become Interim Chief Executive after Melanie Craig stepped down. We also said goodbye to outgoing trustees Terry Ward and Peter Newnham. On behalf of the Board, I would like to thank them all for their enormous contribution throughout their time with the Foundation and wish them well for the future.

The coming 12 months will mark a significant milestone in our history as we celebrate our 20th anniversary year. We also look forward to welcoming Hannah Bloom as our new Chief Executive in February. Hannah joined the Foundation in March as Director of Philanthropy & Engagement and has made a significant contribution to our focus and ethos.

I would like to take this opportunity to express my sincere gratitude to everyone associated with Suffolk Community Foundation – including our staff, volunteers, trustees, donors and patrons – for their hard work and commitment over this time. I look forward to continuing to work closely with them all and making an even greater difference to the people of Suffolk as we start to write the next chapter of the Foundation's story.

A handwritten signature in dark ink that reads "George Vestey".

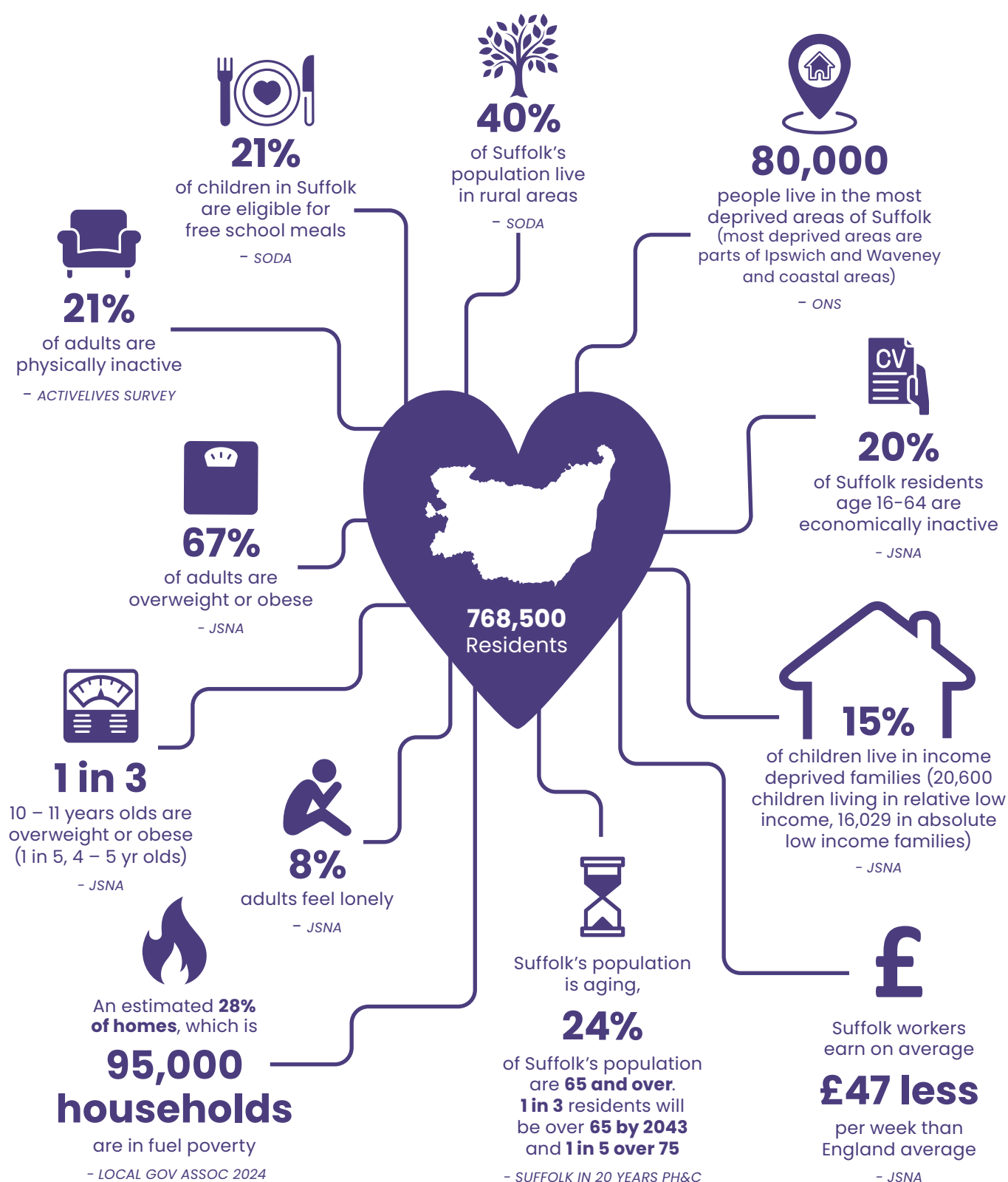
George Vestey DL
CHAIR, SUFFOLK COMMUNITY FOUNDATION



TOGETHER WE SUPPORT:
Restitute CIC

Suffolk Community Foundation thanks Rathbones for their sponsorship of the production of this report.

Understanding our county's challenges



We keep our areas of focus under review to ensure we continue to best meet needs across the county.

Sources:
The Suffolk Office of Data & Analytics (SODA), Joint Strategic Needs Assessment (JSNA), The Office for National Statistics (ONS)

Contents

CLICK BELOW TO NAVIGATE

- 02** About us
- 03** Welcome from our Chair
- 04** Understanding our county's challenges
- 06** 2023/2024 at a glance
- 08** Our highlights
- 13** How we've helped
- 17** Organisations supported
- 20** Why give through us
- 21** How to support us
- 22** Current funds
- 24** Sizewell C
- 26** Financial overview
- 28** Our people - trustees, patrons and staff
- 29** What people say about us
- 31** Stay connected with us

TOGETHER WE SUPPORT:
The GreenMinds Garden

2023/2024 at a glance

We work with around 1,000 donors who range from individuals, companies and community groups to charitable trusts and the public sector. Our collective efforts are creating positive change across Suffolk.



The average grant size was

£3,946



Around **one third** of organisations funded had an annual income of less than

£100,000



1,253

grant applications were received



62%

of applications were successful



862

grants were awarded



41%

of grants awarded were below £2,000




78%

of grants awarded were below £5,000



22%

of grants were £5,000 and over



TOGETHER WE SUPPORT:
Cohere Arts CIC

Cohere Arts CIC were awarded

£5,000

from the East of England
Co-op Community Cares
Fund to support their
High Spirits project; drama
workshops for adults living
with sight loss in Suffolk.

Our highlights 2023/2024

Suffolk Community Foundation continues to work hard to make a positive impact through collaboration and community support for those who need it most.

Surviving Winter Appeal

The Appeal, in its 13th year, raised £146,136 to help some of the most vulnerable households in Suffolk. In December 2023, Suffolk Community Foundation's Tim Holder slept out in Suffolk to fundraise for the cause, raising over £5,500 for the campaign.

Over 1,200 applications were received from households for support. Working with Citizen's Advice Ipswich and branches across Suffolk, 87% of applicants were also referred to the Local Welfare Assistance Scheme enabling them to access government help which is available for people who are struggling to afford the basics. The 23/24 Surviving Winter Appeal sponsor said:

“As a family company, we are deeply passionate about our local community, and are proud to support the dedicated team at Suffolk Community Foundation, and the Surviving Winter Appeal.

Together, we hope to raise awareness of the alarming rise in households experiencing fuel poverty, and encourage those that can, to donate and help keep those in need, warm this winter.”



**MEDITERRANEAN SHIPPING
COMPANY (UK) LTD**



Meet the Funder events

In February, Suffolk Community Foundation held a funding and community engagement event at the Mildenhall Hub, in partnership with The National Lottery Community Fund, Suffolk County Council, Community Action Suffolk, and West Suffolk Council. Local voluntary sector members attended for presentations, networking, and one-to-one meetings with funders.

These events are key to building relationships with organisation new to the Foundation and help us learn more about their challenges and needs.

100% of attendees stated they would attend again, valuing the opportunity to connect with others, learn about the application process and funding available.

MEET THE FUNDER EVENTS



High Sheriff Awards and Annual Review

Over 300 guests representing charities and community groups, Foundation supporters, public sector and business leaders attended Suffolk Community Foundation's Annual Review at Trinity Park on Tuesday 12th March. The event included the presentation of the High Sheriff Awards to four outstanding charities from across the county: Bury Drop In, Room 4, Survivors in Transition and The Hive.

Suffolk Community Foundation Chair George Vestey DL said:

“The current backdrop of rising need and decreasing funding is placing charities and community groups under increasing pressure. Despite this, we have continued to work closely with our existing partners, as well as forging valuable new relationships, so that we can deliver positive change to those most in need.”

The High Sheriff Awards were sponsored by Birketts, Suffolk Building Society, Rathbones and MHA. Other supporters included Studio BrandUp and Kingsfleet Wealth.



HIGH SHERIFF AWARDS



COMMAND PERFORMANCE

Image by Tom Soper Photography



High Sheriff's Command Performance and Charity Auction

Mark Pendlington DL, former High Sheriff of Suffolk, concluded his tenure with a remarkable achievement, raising over £75,000 through two events: The High Sheriff of Suffolk's Command Performance and Legacy Online Auction in association with Birketts LLP.

The High Sheriff of Suffolk's Command Performance, hosted by Angela Rippon CBE, raised over £55,000 for both the High Sheriff's Fund, managed by Suffolk Community Foundation, and the Theatre Royal Bury St Edmunds.

The Legacy Online Auction, contributed nearly £20,000 to the total funds raised. All 23 lots were generously donated and no selling fees were incurred thanks to the generosity of Lacy Scott & Knight and thesaleroom.com ensuring every penny raised benefited the High Sheriff's Fund.

Our highlights 2023/2024 continued...



SUFFOLK MEDAL
Martin Carver

The Suffolk Medal

On Suffolk Day, held on 21st June at a special ceremony in Haverhill town centre, The Suffolk Medal was awarded to Professor Martin Carver, the world-renowned archaeologist who has played an instrumental role in unveiling further secrets of Sutton Hoo.

The ceremony also provided an opportunity to remember and celebrate John Norman, who received the medal in February. Mr Norman dedicated 45 years to enhancing Ipswich while inspiring the next generation with his passion for education. He also contributed to community groups, volunteered with local charities and supported heritage organisations.

The Suffolk Medal was launched in March 2019, with nominations made by the people in Suffolk and decided upon by a panel of the county's leaders. Its purpose is to recognise and champion the exceptional contributions of those who have made a lasting difference to our county.

Suffolk Community Foundation is proud to administer the medal on behalf of the panel.

www.thesuffolkmedal.org.uk



SUFFOLK MEDAL
John Norman

Launch of Suffolk Futures

In 2025 we will be celebrating our 20th anniversary.

To mark this special milestone, we have created a new fund to support organisations who work with 16-25 year olds, helping to address mental health, education, housing and employment. We have specifically chosen this age group as they have grown up at the same time as the Foundation.

The Suffolk Futures Fund was launched in June and the aim is to raise £300,000 through donations and match funding, which will be awarded to charities during our 20th year.



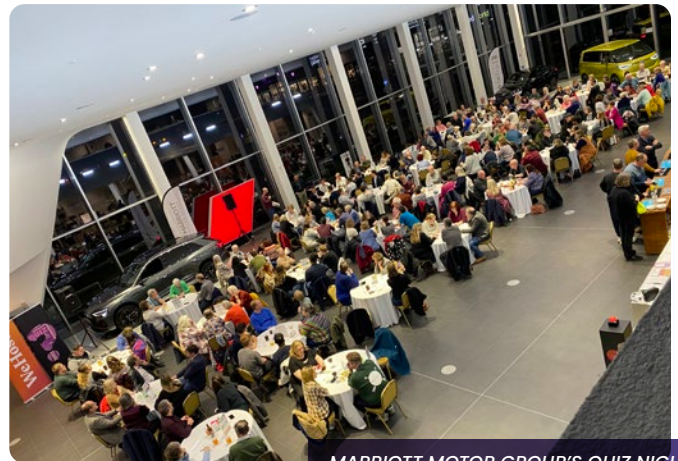
SUFFOLK
Community
Foundation



Networking Events

Throughout the year, Suffolk Community Foundation organised events to spread awareness to professional advisors, existing and potential donors and Suffolk-based businesses. These have included a networking event sponsored and hosted by Greene & Greene Solicitors in Bury, and a private client professionals event held at the Suffolk Food Hall in Ipswich, sponsored by MHA Accountancy and Bates Wells & Braithwaite Solicitors.

There have also been several corporate fundraising events where Suffolk Community Foundation has been the beneficiary. These include Marriott Motor Group's quiz, sponsored runs and walks and an Easter egg hunt. We're incredibly grateful for all their support.



MARRIOTT MOTOR GROUP'S QUIZ NIGHT



ALDEBURGH BOOKSHOP
Mary and John James

A New Suffolk Garland

We would like to take this opportunity to thank Mary and John James from Aldeburgh Bookshop for their phenomenal support.

Through the selling of A New Suffolk Garland, an anthology of Suffolk writing and art, they have raised £21,000 for The Festival of Suffolk Fund.

There are still copies of these beautiful books available via www.newsuffolkgarland.co.uk

Launch of Digital Inclusion Fund

The Digital Inclusion Fund has been developed to reduce digital poverty and its effects across target demographics within Suffolk. The funding has been made available by East Suffolk Council and Suffolk County Council with match funding from Suffolk Community Foundation

The fund aims to help residents become digitally included to enable them to be better informed, pay less for things, be more employable, feel more independent and be less isolated.

Since its launch, the fund has awarded over £145,000 in grants.





Since inception in 2005,
we have awarded **10,900**
grants totalling

£43m

across 3,346 local charities
and community groups.

How we've helped

These stories from the organisations we support highlight the impact of our work throughout the county.

CASE STUDY: Pathways Care Farm



*Pathways Care Farm gives vulnerable people the opportunity to learn, re-build and grow through a range of hands-on farming activities. **Pathways Care Farm was granted £16,340** from the Suffolk Police & Crime Commissioner's Fund which was used to provide a relaxing and rejuvenating retreat for unpaid adult carers – an opportunity for them to relax and have time-out from their regular responsibilities.*

Carers can choose to participate in activities such as working with animals, growing and harvesting flowers and vegetables, arts and crafts or woodwork.

The sessions provide the chance to talk with others who understand – a friendly listening ear if that is something they want. Over time, participants build resilience and confidence, which help them sustain their caring role by increasing their mental, physical and emotional wellbeing.

From a participant who gave up work 15 years earlier to care for her mum who lives with Alzheimer's:

“ I didn't even know that this place existed until someone at the GP surgery mentioned it to me and suggested I made an enquiry. I have only ever worked in an office until I started looking after mum and then life became a repetitive round of housework, cooking, cleaning, shopping (one of the few trips out – but often having to stop her wandering away) and disturbed nights. I had never tried anything like this – especially mucking out donkeys! ”

“ I have been delighted to work with the team at Pathways Care Farm and see at first hand how this funding helps reduce re-offending by teaching individuals practical skills so they gain meaningful employment.

Not only does the economic cost to society reduce significantly but by providing offenders with a second chance they can become good citizens once again. I really congratulate Pathways Care Farm and really look forward to continuing our work with them in the future. ”

TIM PASSMORE, POLICE & CRIME COMMISSIONER



How we've helped continued...

CASE STUDY: Alumah – LW's story



*Alumah, based in West Suffolk, offers a place of safety in which domestic abuse victims can rediscover their self-worth. **Alumah received £5,000** towards their 'Creative' support group.*

LW initially attended the sessions with a very pessimistic outlook and was unconvinced that the programme would have an effect.

LW had been unable to conceive, and her ex-partner had often used the want for a child as a bargaining tool in his abusive behaviours. There was a massive emotional link, as well as trauma here for LW.

Over time, she gained an insight into the behaviours of an abuser and what she had gone through with her ex-partner was abuse. She now understood that she was not to blame.

By the end of the sessions, LW's confidence had grown and she took the decision to start on the path of pregnancy on her own. She now has a beautiful baby and is happy in herself and her life once again.

She has gained knowledge and understanding about abusers and their behaviours and is now more aware of the red flags to look out for in future relationships.

CASE STUDY: Cohere Arts CIC



*Cohere Arts CIC provides opportunities for communities (particularly people living with health challenges and disabilities) to meaningfully engage with arts and culture. **Cohere Arts CIC was awarded £5,000** from the East of England Co-op Community Cares Fund to support their High Spirits project; drama workshops for adults living with sight loss in Suffolk.*

The workshops are specially designed to cater for the needs of visually impaired participants, who have few opportunities to socialise or take part in specific interests such as drama and theatre. Guide-dog friendly venues are chosen and volunteers are trained guiders who talk with the participants to ascertain and meet individual access needs such as providing lifts, meeting from public transport and escorting on foot and/or looking after guide dogs during workshops.

Most importantly, Cohere Arts CIC volunteers ensure there is no patronising or belittling behaviour towards the participants. A previous project participant said:



At Cohere Arts CIC, the programme is informed by clinical and academic evidence around the positive impacts of cultural engagement and its potential to improve health and wellbeing. One participant reported that:

“These projects fill the void in my life that was created by losing my sight.”

“At no point during any part of it did I feel disabled, and I think that's really important.”

CASE STUDY: Lofty Heights Skills Academy



Lofty Heights CIC is a not-for-profit social enterprise. It supports vulnerable people in Suffolk to live safely at home with decluttering and house clearance services.

Through its work, Lofty Heights also creates new and inspiring employment and training opportunities for young people.

Lofty Heights received £36,000 for various projects and academies.

Jordan's Story

Jordan had been out of work for over a year due to an injury before joining the program. Previously, he had completed an apprenticeship in plumbing. The course presented him with an opportunity to refresh his skills, regain confidence, and reintegrate into the construction industry.

During the program, Jordan quickly became a positive influence on his peers, sharing his previous experience and motivating the younger members of the group. He gained both his Construction Skills Certificate Scheme card and an AQA in Hazard Awareness. He worked closely with the academy's progression support team to ensure his success, staying engaged with them even after completing the initial course.

In July 2024, Jordan completed two weeks of work experience with SEH French, receiving glowing feedback for his performance.

After his work experience, Jordan continued to stay involved at Lofty Heights Skills Academy, volunteering for various practical tasks such as helping to fit a kitchen and taking on painting and decorating projects. He consistently contributed two days a week for four months, showing his commitment to staying active and improving his skills.

In August 2024, Jordan secured full-time employment with Rose Builders as a labourer. He is thriving in his new role and enjoying the opportunity to work in the construction industry once again.

CASE STUDY: The Hygiene Bank



The Hygiene Bank gives those who cannot afford to stay clean access to essential and everyday toiletries and hygiene products. The Hygiene Bank receives regular grants to obtain vital products such as toothpaste, nappies and washing powder.

J and her family learnt to budget as best they could and by the end of the month they had just enough to get to and from work and feed the family. But then something unexpected happened: the car failed its MOT and needed expensive repairs. This put them into debt, they got behind in their rent and couldn't climb out of what felt like a hopeless situation.

As any parent would, J prioritised feeding her children at the expense of her own health and wellbeing and fell into sickness and depression. Thankfully, she went to her GP who referred her to the foodbank. The foodbank in question is supported by regular donations from The Hygiene Bank. Therefore, in addition to groceries, J was given essential toiletries for the whole family including, shampoo, body wash, toothbrushes, toothpaste, tampons, deodorant, shaving gel and razors. She was even given washing powder.



“J was overwhelmed and cried with relief and shame. She admitted that the whole family had been washing their hair, their bodies and clothes in cheap washing up liquid. The same one that they used for the dishes. They cut the ends off tubes of toothpaste to eke out the last bits, her husband's beard was a necessity and not a fashion choice and she herself was sometimes housebound when she had her period because she didn't have enough money for tampons.”

**THE FOODBANK
OPERATIONS MANAGER**

How we've helped continued...

CASE STUDY: Aspect Living Foundation



Aspect Living works with the NHS to provide a care package to the elderly and vulnerable to enable them to safely be discharged from hospital and have the support to get back into the community and independent living.

Aspect Living works very closely with all the Suffolk hospital discharge and social care teams and, hearing the struggle of bed space in the NHS, started a project called Hospital to Home (H2H).

Aspect Living received £18,000 for the Hospital to Home meal service, where it delivers hot, nutritious meals and a health and wellbeing check to the elderly and vulnerable across Suffolk.

H2H has worked with over 400 elderly and vulnerable people whilst freeing up hospital beds for other patients.

“There have been occasions when we have gone into a customer's home and have found them unwell or having had a fall. If the driver had not been there to deliver a meal, we would not have been able to help. A lot of the elderly feel it is taking their independence away when they accept help, but they soon realise that we, and other organisations, are working together to support their independence at home.

We can also evidence that this support has stopped many people 'yoyoing' back and forth to hospital; an average of 63% of H2H users have stayed healthy and totally independent in their own homes.

One of our service users had been in and out of hospital eight times in four months. The hospital discharge team introduced her to the H2H project and, since then, she has not been admitted again to hospital. We are not just a support to the service user, but the family members too.”

TESS ARISTO, CEO OF ASPECT LIVING

CASE STUDY: DANES – Disability Advice North East Suffolk



DANES supports those with a disability or long-term health condition and their carers based in Lowestoft and the North East Suffolk area. **DANES received over £25,000** for home visits and its Easy IT and Healthy Hearts programmes.



she could if her husband was already on Attendance Allowance (AA), Personal Independence Payment (PIP) or Disability Living Allowance (DLA).

The system is complex and not easy to navigate. Digging deeper into their circumstances, I learned that they were both elderly and that her husband uses a stair lift and has a walking frame seat in the shower and they are now having a wet room fitted.

I helped with the application form for AA and he was awarded higher rate AA and we got CA for his wife. We also helped with getting him a blue badge, pension credit and council tax reduction. They were both thrilled with the outcome.”

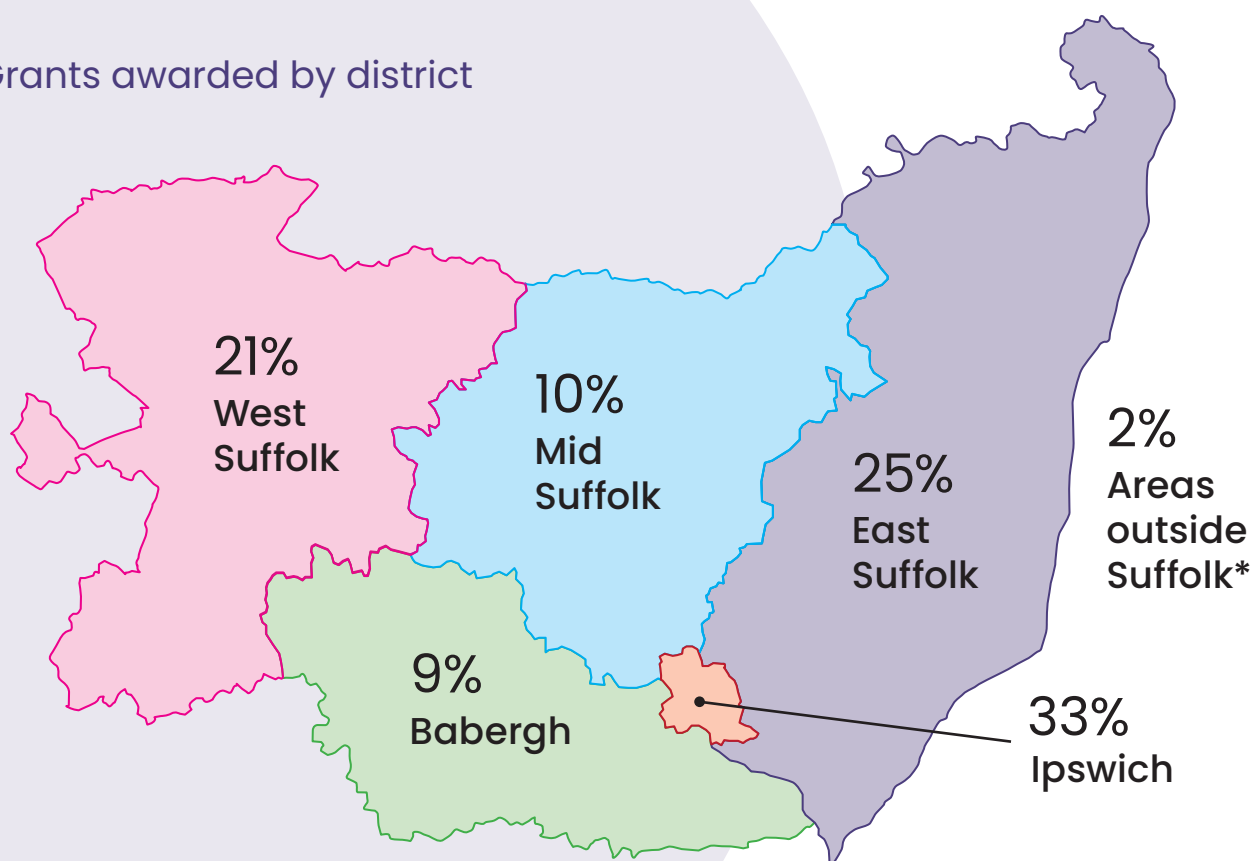
DANES VOLUNTEER

“A client first contacted me to ask if she could claim Carer's Allowance (CA) for her husband who has Prostrate Cancer and Spinal Spondylosis. I explained that

Organisations supported

We would like to thank all our donors, grants panel volunteers and Voluntary, Community, Faith and Social Enterprise (VCFSE) partners for working with us to support and enhance lives in Suffolk.

Grants awarded by district



- 10th Ipswich Brownies
- 1st Deben Valley Scout Group
- 29th Ipswich (All Hallows) Guide Unit
- Abbeycroft Leisure
- Access Community Trust
- Action for Children
- Activlives
- Adult Social Care, Suffolk County Council
- AFC Cedars
- Age UK Norwich
- Aldeburgh Jubilee Hall CIO
- All Saints Church, Brandeston
- Alumah CIO

- Anglia Care Trust
- Anglo Chinese Cultural Exchange
- Art Branches CiC
- Aspect Living Foundation
- Asperger East Anglia
- Autism & ADHD
- Bags of Taste
- Be Me Like We
- Beccles Amateur Sailing Club
- Beccles Public Hall and Theatre
- Beresford Road Evangelical Church
- BME Suffolk Support Group

- Boost Felixstowe
- Bows & Arrows
- Brave Futures
- Breast Friends
- British Gymnastics Foundation
- Britten Pears Arts
- BSC Multicultural Services
- Bucklesham and Foxhall Community Council
- Bury Drop In
- Bury St Edmunds Men's Shed
- Bury St Edmunds Women's Aid Centre
- Cambridgeshire Community Foundation

- Cancer Campaign in Suffolk
- Capel Parish Nurses
- Caribbean and African Community Health Support Forum
- Catch22 Suffolk Positive Futures
- Cavendish District Guiding
- Child Brain Injury Trust
- Children's Community Learning Disability Nursing Team
- Christian Youth Ministries
- Citizens Advice East Suffolk
- Classics for All

* Donor-designated grants or where we work with neighbouring Community Foundations.

Organisations supported continued...

- Clean Sheet
- Cohere Arts CIC
- Combat2Coffee CIC
- Combs Ford Surgery
- Communities Together East Anglia
- Compassion
- Country Trust
- Curwen Print Study Centre
- DanceEast
- Daws Hall Trust
- Debenham Roundabout Preschool
- Disability Advice NE Suffolk (DANES)
- Disability Advice Service (East Suffolk)
- Disabled Children's & Young People Team
- Dora Brown
- East Anglian Air Ambulance
- East Anglia's Children's Hospices
- East Bergholt Tennis Club
- East Coast Community Healthcare ME/CFS Service
- Eastern Angles Theatre Company
- Eden's Project
- El Tres Promotions CIC
- Emmaus Suffolk Ltd
- EPIC Dad Community Interest Company
- Families Together Suffolk
- First Light Festival CIC
- For Children & Young People
- Forge Community Church
- Framlingham Area Youth Action Partnership
- Freedom Church
- Fresh Start Charity
- Friends of Oakfield Surgery
- Friends of Woodbridge Primary
- Future Female Society
- Game Anglia C.I.C.
- Gatehouse Caring in East Anglia
- Great Barton Free Church
- Green Light Trust
- Grundisburgh Youth Club
- Halesworth Volunteer Centre
- Happy Days Children's Charity
- Happytots Pre-School
- Haverhill Community Trust
- Headway Norfolk and Waveney
- Headway Suffolk
- Hertfordshire Hearing Advisory Service
- HighTide Theatre
- Hintlesham and Chattisham Church of England Primary School
- Home-Start in Suffolk
- Honington and Sapiston Village Hall
- Hope After Suicide Loss
- Hope Church Ipswich
- Hope for Tomorrow
- Horizon School
- Hour Community
- Hypo Hounds
- Icenii Ipswich
- Independent Provider of Special Education Advice
- INK (Pen to Performance)
- Innov8 Workshops
- Inside Out Community
- Inspire Counselling and Training
- Inspire Suffolk
- Integrated Community Paediatric Services
- INVOLVE Active
- Ipswich & District Citizens Advice Bureau
- Ipswich All Hallows Parochial Church
- Ipswich and Suffolk Indian Association
- Ipswich Community Media and Learning CIO
- Ipswich Community Playbus
- Ipswich Furniture Project
- Ipswich Housing Action Group (IHAG)
- Ipswich Multiples Club
- Ipswich Opportunity Group
- Ipswich Outreach Bus
- Ipswich Sea Cadets
- Ipswich Town Community Foundation
- Just42
- Karibu African Women's Support Group
- Kernos Centre
- Kinetic Adventure CIC
- Kirkley People's Forum
- KLM Physio
- Lapwing Suffolk
- L'Arche Ipswich
- LEAPS Suffolk
- Let's Talk Reading
- Level Two Youth Project
- Lighthouse Women's Aid
- Livability
- Lofty Heights CIC
- Lowestoft and Waveney Breastfeeding Support
- Lowestoft Community Church
- Lowestoft Live CIC
- Make Play CIC
- Making Fitness Accessible CIC
- Memories are Golden
- Men's Advice Recovery Support (MARS) BPD Group
- Mid Suffolk Voluntary Organisation Forum
- Missing People
- MN Well-Child Support CIC
- Morabe Rural Music
- Moving Well Debenham
- Murrayside Community Development CIC
- Music Prescription CIC
- My Life
- Nacton & Bucklesham Under 5s
- Nacton Village Hall CIO
- Neurodelicious CIC
- New Life Church
- New Life Church Community Great Cornard
- Newmarket Cricket Club
- Newmarket Day Centre
- Newmarket Open Door
- Norfolk & Suffolk NHS Charitable Foundation Trust
- Northampton Saints Foundation
- Northgate High School
- Oasis English Language School
- Old Felixstowe PCC Popup shop
- Orchard House Surgery
- Orford Museum CIO
- Ormiston Families
- Orwell Mencap
- Our Special Friends
- Out Loud Music
- PACT Parents and Carers Together CIC
- Panathlon Foundation

“If it wasn't for The Pear Tree Fund I wouldn't get out of the house. It's such a lovely place. I've met some lovely people and made so many new friends.”

**ATTENDEE OF
THE PEAR TREE**



TOGETHER WE SUPPORT:
The Pear Tree Fund

- Parish of Felixstowe, St John the Baptist with St Edmund
- Pathways Care Farm
- PHOEBE
- Pisces Swimming Club for Disabled People
- Plunkett Foundation
- Porch Project
- Raedan Trust (Suffolk)
- REACH Community Projects
- Redlingfield Parish Meeting
- Restitute
- Rickinghall and Botesdale Good Neighbour Scheme
- Riding for the Disabled (Woodbridge & District Group)
- Right Time Counselling Services CIC
- River Church Ipswich
- Rock Paper Scissors Arts CIC
- Room 4...
- Rougham Sports and Community Hall
- Rural Coffee Caravan Information Project
- Samaritans of Ipswich & East Suffolk
- Samuel Ward Academy
- Saxmundham Tennis Club
- SCC Eye Integrated Neighbourhood Team
- Schoolreaders
- Second Chance Stroke Group
- SHAKE Festival CIC
- Shepherd Drive Baptist Church
- Simple Norfolk
- SPILL Festival Ltd
- SSAFA The Armed Forces Charity
- St Elizabeth Hospice
- St John the Baptist Church Saxmundham / SKU
- St Johns Church Elmswell
- St Margaret's Church (Parochial Church Council [PCC])
- St Mary and St Botolph Whitton IPSWICH
- St Nicholas Hospice
- St Peter's Church
- St Peter's Church, Stoke Park
- St Philips Community Hub {St Marys Church Walton PCC}
- St Thomas Church Ipswich
- St Thomas the Apostle and Martyr Ipswich
- St Mary Stoke Parochial Church Council
- Steel Bones
- Stoke High School
- Stour Valley Vineyard Church
- Stowmarket and area Foodbank
- Stowmarket ASD Saturday Clubs
- Stowmarket Relief Trust
- Sudbury & South Suffolk Citizens Advice
- Sudbury and District Citizens Advice
- Suffolk Accident Rescue Service
- Suffolk Artlink
- Suffolk County Council
- Suffolk Family Carers
- Suffolk Libraries
- Suffolk Mind
- Suffolk Philharmonic Orchestra
- Suffolk Preservation Society
- Suffolk Refugee Support
- Suffolk Sight
- Suffolk Wildlife Trust
- Survivors in Transition (SiT)
- Swim Fore It
- The Art Station
- The BASIC Life Charity
- The Befriending Scheme
- The Christopher Centre
- The Compass
- The Dollywood Foundation
- The ERD Connection
- The Hal Company
- The Hive Ipswich CIC
- The Landmark Trust
- The Lightwave Community CIO
- The Living Paintings Trust
- The Mindful Life Group CIC
- The Mix Stowmarket
- The Not Forgotten Association
- The Offshoot Foundation
- The Racing Centre
- The Seagull Lowestoft CIC
- The Stone Foundation
- The Yard
- Theatre Royal Bury St Edmunds
- Thorpe Woodlands Adventure Centre Trust
- TOPCATS
- Transforming Futures – Suffolk
- Union Romani Voice
- University of East Anglia
- University of Suffolk
- Unscene Suffolk
- Voices for Gainsborough Community Library
- Voluntary Network
- Volunteer It Yourself CIC
- Volunteering Matters
- Walton Parish Nursing
- Warden's Charitable Trust
- Waveney Domestic Violence & Abuse Forum
- Waveney Gymnastics Club
- West Disabled Children and Young People's Team
- West Suffolk Hospital Foundation Trust
- Whitton Youth Partnership
- Wickham Market Medical Centre PPG
- Wickham Market Partnership
- Wild Heritage Suffolk (CIC)
- Women Like Me
- Woodbridge Climate Emergency Centre
- Woodbridge Cricket Club
- Woodbridge Salvation Army
- Woolverstone Project
- YMCA Trinity Group
- Zebras Children and Adults Charity
- 13 Individual bursaries to advance the education of local residents



TOGETHER WE SUPPORT:
INVOLVE Active

Why give through us

Deprivation exists across the whole of Suffolk. We work across the county and have extensive knowledge of local organisations and communities and their specific needs.

We have given 10,900 grants totalling £43 million across over 3,346 local charities and community groups to date.

The benefits of giving through Suffolk Community Foundation are:

- We provide support to people in local communities, and we can suggest organisations that donors may not be aware of.
- We have a deep understanding of Suffolk's grassroots organisations, their challenges and how they address local need.
- We will agree fund criteria with the donors and manage the grant application, selection and reporting process.
- We complete due diligence checks and ensure money is spent as intended, so it is in safe hands.
- We can arrange visits to charities and will produce end of year impact reports showing what difference the donation has made.
- By pooling support with other donors, the donations themselves can have a bigger impact.
- If donors are UK taxpayers, Gift Aid allows 25% to be added to their donation and higher taxpayers can benefit from extra incentives. We can also match fund in some cases.

We also have several giving circles where you can join a supportive group of like-minded people who want to make a difference by making a regular donation which, when pooled together, has a bigger impact. Examples include:

- Suffolk 100 members donate £1,000 per year towards our core costs enabling us to maximise grantmaking in the county.
- The Women & Girls' Fund works to support women and girls in need.
- The Food and Drink Fund addresses food, nutrition and education.
- The Port Community Fund supports organisations working in Felixstowe, Ipswich and the surrounding area.
- Wider Horizons is a membership club which supports organisations across Suffolk.
- Stand Up for Suffolk was set up by a group of friends in south west Suffolk to give them the opportunity to learn more about the hidden need in their area.

If you are interested in getting involved as an individual, business or group, we would love to hear from you.

T: 01473 944 732

W: suffolkcf.org.uk



TOGETHER WE SUPPORT:
Old Felixstowe Top Up Shop

How to support us

Supporting charities via Suffolk Community Foundation makes charitable giving easy.

We have around 1,000 donors – individuals, companies, community groups, charitable trusts and the public sector. There are many ways to channel your giving.

Donate to The Suffolk Giving Fund

This fund supports a variety of charities tackling different issues in the county and is open to all charities and organisations. It makes grants of less than £3,000 with the aim of distributing £100,000 per year.

Set up a named fund

Creating your own named fund gives you the opportunity to choose the cause and the projects you wish to support. It is a simple and effective alternative to setting up your own foundation and we will work with you to ensure your donations are used wisely each year. This could be established as an endowment fund or a flow through. Some fundholders even choose to combine the two which allows for more flexibility.

Join a Giving Circle

By making a regular donation you can join a supportive group of like-minded people who want to make a difference. When your donations are pooled you can have a bigger impact, and you have an opportunity to decide where the funding goes.

Leave a gift in your will

A legacy in your will helps your community into the future. You may wish to establish a named fund in your memory or choose to allocate your gift to one of our existing funds. No matter how large or small, a legacy is a gift to those less fortunate.

Sponsorship or a gift in kind

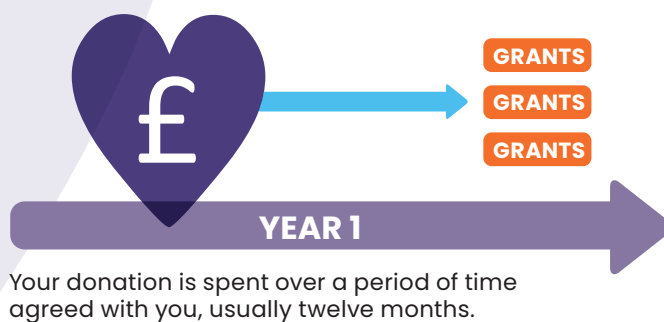
We have many events and publications that require sponsorship each year, cementing your partnership with Suffolk Community Foundation. We are also grateful for the donation of skills, expertise or products.

Support a campaign

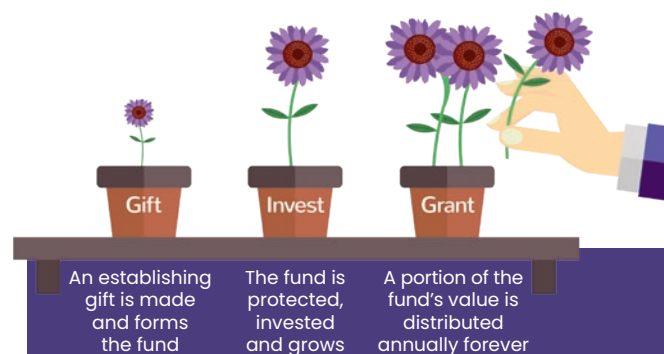
Each year we deliver campaigns such as Surviving Winter which assists older people to heat their homes. Donations of any size are always welcome because, without your support, we couldn't help as many people in the county.

How a flow through fund works

Your annual donation is used to provide immediate funding across Suffolk.



How an endowment fund works



**For further information,
please contact:**

Fran Wright
Philanthropy Manager

E: fran.wright@suffolkcf.org.uk

T: 01473 944 732

W: suffolkcf.org.uk



Current funds

Thank you to our donors and fund holders. Your generosity enables us to support local community groups working with the most vulnerable across Suffolk.

- Acorn (Pound Gates & Sevatas) Fund
- Apollo Fund
- Arts & Culture Fund
- AXA Insurance Fund
- Axter Climate & Community Fund
- Barclay Family Fund
- Beacon Commodities Fund
- Birketts Fund
- Bluebell Fund
- Breakthrough Fund
- Brooks Fund
- Bunbury Fund
- Bunting Family Fund
- Cancer Community Partnership Fund
- Caroline, John & Meryn Everitt Fund
- Catalyst Fund
- Cellnex Digital Inclusion Fund
- Centenary Fund
- Chapman Family Fund
- Clopton Estate Ltd Fund
- Community Inclusion Fund
- Community Support Fund
- Co-op Community Cares Fund
- Co-op Pennies from Heaven Fund
- Cunliffe Family Fund
- David & Jill Simpson Fund
- Davies Family Fund
- De La Rue Fund
- Denbury Charitable Fund
- Digital Inclusion Fund
- Dolphin Franklin Fund
- D'oyly Tartes Fund
- E & J Legacy Fund
- Edward & Ivy Rose Hood Fund
- Ellisons Foundation Fund
- Equity in Mind Fund
- Euston Fund
- Evdemonia Fund
- Festival of Suffolk Fund
- Fonnereau Road Health Foundation Fund
- Food & Drink Fund
- Frank Jackson Foundation Fund
- Fred Olsen Community Fund
- Gary Gladwell Sports Fund
- George Vestey Family Fund
- Grassroots Fund
- Harris Family Fund
- Harwich Haven Authority Fund
- Healthy Heart Fund
- Hewlett Fund
- High Sheriff's Fund
- Hill Family Fund
- Hintlesham & Chattisham Fund
- Hodge & Shallow Fund
- Horizon Fund
- Household Support Fund
- Hubble Bubble Fund
- Hughes-Hallett Fund
- Iken Peninsula Fund
- In Memoriam Fund
- Ipswich School Charity Fund
- Kemball Fund
- Kingsfleet Fund
- Langlands Fund
- Lovewell Blake Fund
- Lowestoft CVD (Healthy Hearts) Fund
- Mahony Family Fund
- Marriott Motors Fund
- Martineau Care Fund
- Martineau Property Fund
- Martineau Transforming Suffolk Investment Fund
- Maurken Fund
- Michael Ben Howes Fund
- Miller Trust Fund
- Mitchell Fund

“We are very grateful for this generous funding which has had such a positive impact to our community and charity. As a small charity we find the application and monitoring processes very easy and user friendly. Thank you for your support.”

INSIDE OUT

- Orpheus Fund
- Orwell Park School Charitable Fund
- Pam Winter & Eileen Gobbett Fund
- Pargiter Trust Fund
- Pear Family Fund
- Peter & Dorothy Meade Fund
- Peter Rous Fund
- Philipps Fund
- Police & Crime Commissioner's Fund
- Port Community First Fund
- Port Community Fund
- PPG Pound Fund
- Rachel Penny Bird Hide Fund
- Realising Ambition Fund
- REND Fund (Waveney)
- REND SNEE Fund
- RJB Fund
- Rous Fund
- Rowland Fund
- RSM Fund
- RSM Transforming Suffolk Fund
- Rural Community Fund
- Rutgers Fund
- Sabariah's Fund
- Sapphire Fund
- Scarecrow Fund
- Scrutton Bland Fund
- Serious Violence Duty Fund
- Shadwell Fund
- Sheepshanks Fund
- SIFRE Inter-Faith Fund
- SIFRE Legacy Trust Fund
- Simpson Fund
- Sizewell C Community Fund
- Skinner's Fund
- Stand Up for Suffolk Fund
- Stimulus Fund
- Stimulus TS Fund
- Stubble Fund
- Suffolk 100
- Suffolk Building Society Community First Fund
- Suffolk Carers Fund
- Suffolk Fund
- Suffolk Community First Fund
- Suffolk Development Fund
- Suffolk Futures Fund
- Suffolk Giving Fund
- Suffolk Growing Minds Fund



TOGETHER WE SUPPORT:
Meet Up Mondays at the
White Horse, Thelnetham

- Suffolk Medal Fund
- Suffolk Rural Fund
- Suffolk Rural Lifeline TS Fund
- Suffolk Smokefree Generation Fund
- Suffolk Sports Fund
- Suffolk's Cancer Screening Awareness Fund
- Tackling Poverty, Food and Financial Wellbeing Fund
- Tattersalls Fund
- Technology Networks Charitable Fund
- The Beckett Health and Wellbeing Fund
- The Cunliffe Family Fund
- The Lentonbrook Fund
- The SEH French Ltd Fund
- Transforming Suffolk Loan Fund
- UEA Hood Fund
- Vestey Fund
- Violence Against Women & Girls Fund
- Wellesley Wesley Fund
- West Fund
- West Le Basse Family Fund
- Wider Horizons (Aldeburgh) Fund
- Wider Horizons (Woodbridge) Fund
- WN Estates Family Fund
- Women & Girls Fund
- Woodward Fund

In addition, we hold a number of private family funds and receive regular support from businesses, individuals and charitable trusts based in the county. We thank them all for their ongoing generosity.

“Thanks to your support, we've been able to reach children who often slip through the cracks in education.”

THE MIX, STOWMARKET

Sizewell C

In January 2023, it was announced the Sizewell C Community Fund will donate up to £23m over the next decade for local charities, community groups and social enterprises which operate in East Suffolk.

The focus of the fund is on reducing the impact of, or building on the opportunities created by, the construction of Sizewell C nuclear power station.

By addressing the economic, environmental, and social needs of local residents, the fund aims to enhance quality of life and wellbeing. Priority will be given to communities located closest to the development sites, to projects that are supported by the wider community, and to those providing a positive and sustainable legacy.

Suffolk Community Foundation has built up extensive experience in managing such funds over the past 19 years and is well placed to make sure the money has the greatest possible impact on the local community.

Grants are approved by a panel representing a wide range of local bodies and people. The panel is chaired by Helen Taylor, a trustee of Suffolk Community Foundation with extensive experience in the charity, community development, governance and health sectors.

The Sizewell C Community Fund is open all year-round. It is divided into four rounds with specific closing dates. We encourage all potential applicants to discuss their project ideas with us to ensure it fits with the fund before making an application. Organisations which have spoken to us before applying have fed back that they found it helped them ensure their applications met the purpose of the fund.

For more information, please visit www.sizewellcfund.org.uk




“It is important to me that the people of Leiston and the surrounding villages have a strong voice on the Awards Panel.

The construction of Sizewell C is already presenting challenges, but we need to also realise the opportunities it creates.

I live and work in the areas most affected and I look forward to hearing the ideas and bids for funds and to be part of the team that ensure these funds are well spent.”

KAREN, PANEL MEMBER

A photograph of a smiling woman with short white hair and sunglasses, wearing a floral dress and a necklace. She is crouching in a lush garden, holding a black watering can and watering plants. The background is filled with various green plants and flowers.

TOGETHER WE SUPPORT:
The Pear Tree Fund

62%

of all grant applications
received in 2023/24 were
successful. **Our average
grant size was £3,946.**

[BACK TO CONTENTS](#)

Financial overview

for the year ended 30 June 2024

	Unrestricted funds £	Restricted funds £	Endowment funds £	Total 2024 £	Total 2023 £
Income and endowments from:					
Donations and legacies	266,109	5,105,990	173,160	5,545,259	4,223,731
Other trading activities	-	-	-	-	90,134
Investments	129,706	582,512	-	712,218	603,897
Total income	395,815	5,688,502	173,160	6,257,477	4,917,762
Expenditure on:					
Raising funds	222,570	73,004	48,922	344,496	350,814
CHARITABLE ACTIVITIES					
Grants awarded	167,647	3,233,621	-	3,401,268	4,473,931
Other charitable activities	845,515	13,742	554	859,811	704,330
Total expenditure	1,235,732	3,320,367	49,476	4,605,575	5,529,075
Net gains / (losses) on investments	-	-	1,437,588	1,437,588	403,188
Net income / (expenditure)	(839,917)	2,368,135	1,561,272	3,089,490	(208,125)
Transfers between funds	590,561	(273,910)	(316,651)	-	-
Net movement in funds	(249,356)	2,094,225	1,244,621	3,089,490	(208,125)
Fund balances at 1 July 2023	930,944	2,061,732	20,478,000	23,470,676	23,678,801
Fund balances at 30 June 2024	681,588	4,155,957*	21,722,621	26,560,166	23,470,676

These financial statements have been prepared in accordance with the provisions applicable to companies subject to the Companies Act 2006 small companies' regime. The financial statements were approved by the Board and authorised for issue on 24th October 2024.

Mr G Vestey / Mrs S Gull
TRUSTEE TRUSTEE

Company Registration No. 05369725 / Registered Charity No. 1109453

Statement by the Trustees

These summarised financial statements are a summary of information extracted from the annual accounts, audited by Ensors Accountants LLP, on which the auditors' opinion was unqualified. The full report and accounts were approved by the Trustees on 24th October 2024 and have been submitted to the Charity Commission and the Registrar of Companies. These summarised financial statements may not contain sufficient information to allow for a full understanding of the financial affairs of the charity. For further information, the full accounts, the auditors' report on those accounts and the Trustees' Annual Report should be consulted. Copies of these may be obtained from Suffolk Community Foundation registered office.

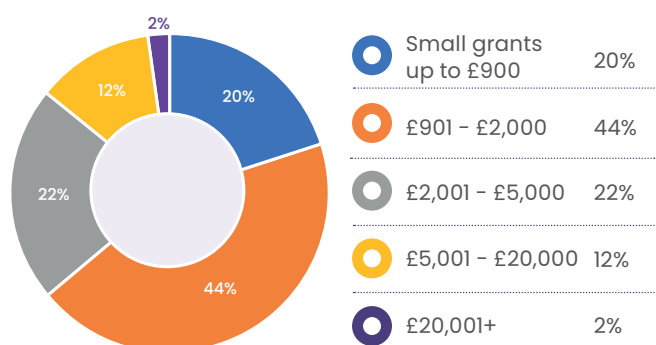
* This balance shows the addition of the Sizewell C funding.

Financial overview

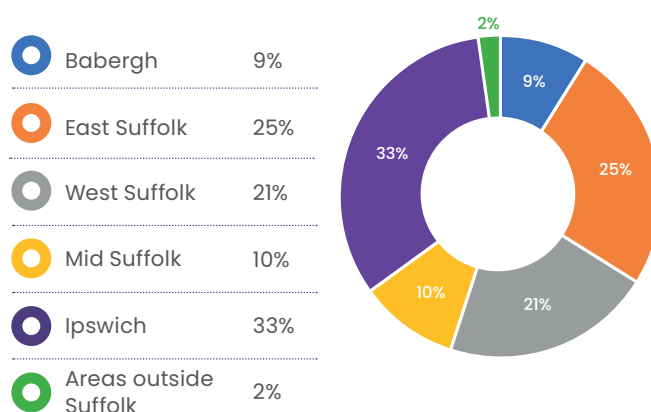
as at 30 June 2024

	2024 £	£	2023 £	£
Fixed assets				
Tangible assets		10,168		6,239
Investments		19,177,833		17,785,705
Investment properties		3,035,000		3,035,000
Total fixed assets		22,223,001		20,826,944
Current assets				
Debtors	682,407		899,129	
Cash at bank and in hand	4,542,706		3,083,538	
Total current assets	5,225,113		3,982,667	
Liabilities				
Creditors amounts falling due within one year	(783,948)		(1,284,739)	
Net current assets		4,441,165		2,697,928
Total assets less current liabilities		26,664,166		23,524,872
Creditors: amounts falling due after more than one year		(104,000)		(54,196)
Net assets		26,560,166		23,470,676
The funds of the charity:				
Capital funds				
Endowment funds		21,722,621		20,478,000
Income funds				
Restricted funds		4,155,957		2,061,732
Unrestricted funds		681,588		930,944
Total charity funds		26,560,166		23,470,676

% Grants awarded by size 2023/24



% Grants awarded by district 2023/24



Our people – trustees, patrons and staff

Suffolk Community Foundation is powered by the passion and dedication of our trustees, patrons, and staff. They work together to make a real difference, helping us support and strengthen communities across Suffolk.

Patrons

Clare, Countess of Euston
HM Lord Lieutenant of Suffolk

Rachel Kearton
Chief Constable, Suffolk Constabulary

Yvonne Gilchrist-Mason, OBE, DL
2024/25 High Sheriff of Suffolk

The Rt Revd Martin Seeley
The Bishop of Edmundsbury and Ipswich

Honorary Life Patron

James Buckle DL

Vice Patrons

Lord & Lady Cunliffe

Dr Scilla Dyke MBE

Sir Christopher Howes

Christine Truman James MBE

Lord & Lady Stevenson of Coddtenham

Chair

George Vestey DL

Trustees

Jonathan Agar DL

Sue Gull

Jordan Holder

William Kendall DL

Louise Long

Jane Millar

Helen Taylor

Neil Walmsley

Gareth Wilson DL

Sarah Zins

Our Team

Anna Hughes
Interim Chief Executive

Hannah Bloom
Director of Philanthropy & Engagement

Nicki Bray
Grants Manager

James Brewer
Sizewell C Community Fund
Grants Officer

Olly Chaplin
Finance Officer

Tracey Fuller
Grants Officer

Clare Gibson
Grants Officer

Olena Kushakovska
Grants Support Officer

Sarah Mortimer
Sizewell C Community Fund
Project Manager

Anna Norman-Butler
Communications Manager

Kate Paul
Special Projects

Jess Prosser
Programmes Manager

Katie Read
Philanthropy Assistant

Julie Rose
Grants Officer

Anna Stogdon
Impact Manager

Lorna Todd
Business Manager

Mark Wilkinson
Director of Finance & Operations

Fran Wright
Philanthropy Manager

If you need to speak to one of the team, please call us on 01473 602 602



The Suffolk Community Foundation team
(absent: Olly Chaplin, Kate Paul, Julie Rose and Anna Stogdon)

What people say about us

Hear from the people who know us best: our supporters, partners, and those we've helped.

“I never tire of saying that the Foundation is more like a partner than a funder. I can get in touch to discuss funds or needs or new projects... even ideas.

Their team is always responsive and willing to listen and provide sound evaluations or guidance.”

PATHWAYS CARE FARM

“Having a fund with Suffolk Community Foundation connects me with so many wonderful local charities that I wouldn't otherwise be aware of.

Working with them gives me the confidence to make philanthropic payments within my local community safe in the knowledge that my money will be put to the best possible use and that all due diligence has been completed. Having worked with SCF for several years, the team understand my giving criteria and always produce a personalised list for my panels.”

DONOR

“Everyone at Suffolk Community Foundation is extremely helpful, friendly, and supportive in every aspect of applying for grants and obtaining funding for our charity.

The information and support given is invaluable to us. It is this support that enables us to sustain our community work with the vulnerable and disadvantaged children, young people, and adults in our part of Suffolk. Everyone at Kernos is deeply grateful to Suffolk Community Foundation.”

KERNOS CENTRE

“A heartfelt thank you to SCF for their ongoing support. The generosity and dedication of your donors makes a real difference in our work here, we're building a brighter future for everyone.”

REACH

“We couldn't do what we do without SCF having everything in place. We really have only positive things to say...”

THE OUTSIDERS COMMUNITY CONSULTANTS CIC



MeetUpMondays™, run by

The Rural Coffee Caravan

gives hospitality businesses the chance to strengthen their local community and show that the commercial world also cares about ending loneliness.

Volunteers with cakes at the ready at Fisher Theatre, Bungay.

Stay connected with us

Do you know you can find us on social media too?



Be sure to connect with us on Facebook, Instagram, LinkedIn and YouTube to stay updated with events, news and to gain a real insight into what the Foundation team gets up to, to help address the need in our county.

If you want to keep up to date with what we are up to you can also join our mailing list. By joining our mailing list, you will receive the occasional updates about new funds, as well as the latest news from the team. You can subscribe here:

suffolkcf.org.uk

Whilst our website is home to all information about the Foundation, should you wish to speak to one of the team please do call us on:

01473 602 602

As we seek to reduce our carbon footprint, more of our literature and reports are being delivered electronically. This QR code will take you to an electronic version of this report – please do share it with your friends and colleagues.



The team at Daws Hall Nature Reserve

TOGETHER WE SUPPORT:
The Rural Coffee Caravan



SUFFOLK
Community
Foundation

Suffolk Community Foundation

The Old Barns
Peninsula Business Centre
Wherstead, Ipswich
Suffolk, IP9 2BB

T: 01473 602 602 E: info@suffolkcf.org.uk

Company limited by guarantee. Registered in England
registration No: 5369725. Charity No 1109453

Suffolk Community Foundation is a member
of the UK Community Foundations

suffolkcf.org.uk



Designed by: carolineoanes.co.uk

Featuring photography by: simplycphotography.co.uk

Printed by Leiston Press

With special thanks to Rathbones for
supporting the design of this publication

*All names have been changed in case studies and quotes
to protect the identity of the individual(s) concerned.*



**WHEN YOU'RE READY TO WRITE THE NEXT CHAPTER IN YOUR WEALTH STORY,
RELY ON RATHBONES.**

A TRUSTED PARTNER FOCUSED ON YOU AND YOUR FINANCIAL GOALS. FOR INDIVIDUALS AND FAMILIES.

For further information, please contact Mark Winchester on 0122 322 9213 or email mark.winchester@rathbones.com or visit:

rathbones.com

**The value of investments and the income from them may go down
as well as up and you may not get back what you originally invested.**

Rathbones is a trading name of Rathbones Investment Management Limited which is authorised by the Prudential
Regulation Authority and regulated by the Financial Conduct Authority and the Prudential Regulation Authority.