



SUFFOLK
Community
Foundation



ANNUAL REPORT 2025



Celebrating 20 years of grantmaking

suffolkcf.org.uk

Supporting local lives:
Bike Active North Suffolk

*Our thanks to Rathbones for their generous support in
funding the production and printing of this report*

About us

Suffolk Community Foundation was founded in 2005 to respond to local needs and has since become the largest independent grantmaker in the county. In 2024/25, through the support of our donors and partners, we awarded £3.8m* in grants to charities and voluntary organisations across Suffolk.

We work closely with charities and community groups to help them access funding that makes a real difference to people's lives. Our grants support a wide range of initiatives—from foodbanks and homelessness services to youth programmes and organisations addressing mental health issues, inequality and social isolation.

Suffolk benefits from a generous network of individuals, families, businesses, professional advisers and charitable trusts who are passionate about making a positive impact in areas like health, wellbeing, social justice, and inclusion. With our local insight and experience, we ensure that their support is delivered safely, efficiently, and in full compliance.

Our Vision

To resource charities through giving to enable all communities across Suffolk to thrive.

Our Mission

Suffolk Community Foundation connects causes that matter with people who care, to strengthen the voluntary sector and increase charitable support across the county. We do this by:

- Being the experts in safe charitable giving, ensuring donors feel informed and engaged, and understand the impact of their support.
- Championing the diverse voluntary sector, from grassroot to larger organisations, through grantmaking and other support.
- Having an unparalleled understanding of local issues; we are responsive to the changing landscape and act as an advocate for the voluntary sector.
- Building long term, trusting relationships with both charitable organisations and donors.
- Growing sustainable giving and future proofing support for charities through growth of our invested endowment fund.

Our Values

Passionate: We are ambitious advocates for our county. We pride ourselves on our expertise and making a difference.

Approachable: We use understanding and empathy to inform our fair and transparent decision making. We strive to be responsive and accessible.

Collaborative: We work in partnership and believe that through collaboration, collectively we can have a greater impact.

Trustworthy: We are experienced and knowledgeable, acting with integrity and professionalism.

**Not including grants made by the Sizewell C Community Fund.*

Since inception in 2005 we have delivered

£46.8m

of grant funding to address needs in Suffolk.

Contents

CLICK BELOW TO NAVIGATE

- 02** About us
- 04** Chair and Chief Executive's welcome
- 05** Understanding our county's challenges
- 06** 2024/25 at a glance
- 07** State of the Sector
- 08** Our highlights 2024/25
- 13** *How we've helped: Case studies part 1*
- 14** Sizewell C Community Fund
- 15** *How we've helped: Case studies part 2*
- 16** Organisations supported
- 19** *How we've helped: Case studies part 3*
- 20** Introducing the Philanthropy Team
- 21** The lasting legacy of a gracious philanthropist
- 22** *How we've helped: Case studies part 4*
- 23** Equity in Mind
- 24** Funds 2024/25
- 26** Financial overview
- 28** Our people - trustees, patrons and staff
- 29** What people say about us
- 30** *How we've helped: Case studies part 5*

Supporting local lives:
Green Light Trust

Chair and Chief Executive's welcome

From our Chair, George Vestey DL

Welcome to our annual report and financial statements for the year ended 30 June 2025.

It continues to be a challenging time for many of Suffolk's fantastic charities and community groups, with the current economic climate bringing added pressures amid high levels of demand. Against this backdrop, the vital work carried out by Suffolk Community Foundation and our partners has become ever more important. We are delighted to have awarded £3.8million to 362 charities and community groups in the past year.

In addition, we have marked the first year of giving through the Sizewell C Community Fund, which has so far channelled around £2.5m into 36 projects, (for more information about the fund, please go to [page 14](#)).

This extensive grant giving would not have been possible without the hard work and commitment of our dedicated team. This year, we welcomed Hannah Bloom to her new role as Chief Executive, along with Danielle Waller and Charlotte Rowlands as Director of Grants and Impact and Director of Finance and Operations, respectively. These appointments complement the skills and experience at the Foundation, bringing added stability and a strong sense of direction. I am incredibly proud of our entire team, who continue to make an impact every single day.



This year, we celebrated our 20th anniversary. To mark this significant milestone, we created the Suffolk Futures Fund and are proud to have matched all donations by 50% from a legacy gift. Thank you to those who generously donated. We have reflected on how far we have come since we launched in 2005 with a seed fund of just £1m. This is a huge credit to everyone who has helped to build Suffolk Community Foundation over the past 20 years – both past and present.

During the year, we said a heartfelt thank you and goodbye to outgoing trustees Jonathan Agar and Sue Gull. On behalf of the Board, I would like to thank them both for their enormous contribution and wise counsel throughout their time with the Foundation.

Finally, I would like to take this opportunity to express my sincere gratitude to everyone who continues to support us, including our donors, trustees, ambassadors, volunteers, staff and partners. Thanks to you, we have reached those in greatest need, helping to make a real and lasting difference to their lives.



From our Chief Executive, Hannah Bloom

I've thoroughly enjoyed my first nine months as Chief Executive of Suffolk Community Foundation.

I have been lucky enough to meet some incredible people while hearing a raft of inspiring stories about the positive impact the funds we distribute are having.

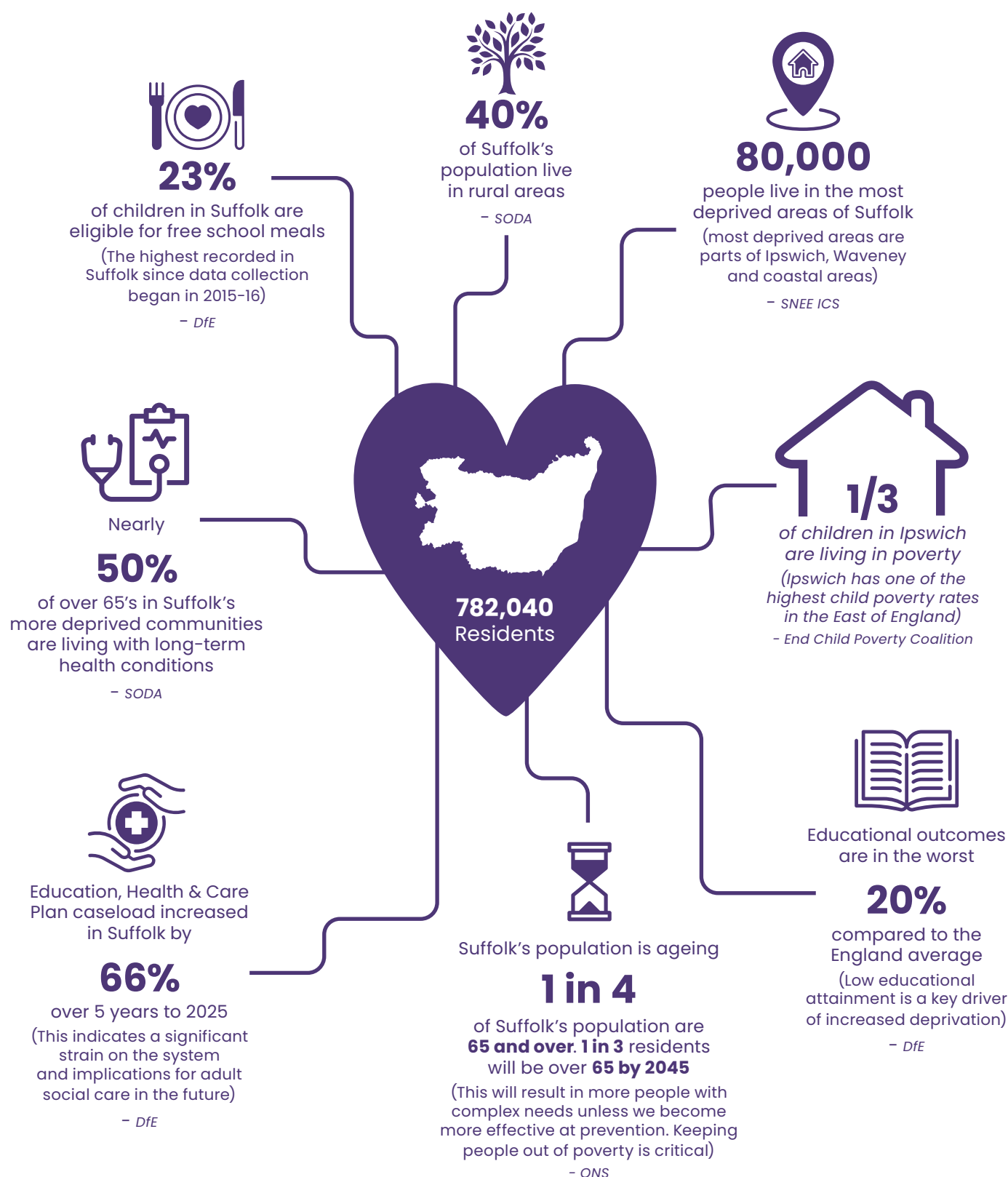
The stark reality facing our county's voluntary and community sector was laid bare in the State of the Sector Report, for which we partnered with Community Action Suffolk. To read more about the 'perfect storm' facing local charities, please see [page 7](#).

At Suffolk Community Foundation, we are evolving the way we work. We continue to encourage and develop local philanthropy, both individual and corporate, and have worked hard to strengthen our relationships with our donors who make everything we do possible.

We aspire to advocate for the sector and to support charities and community groups to improve their efficiency and therefore sustainability. This means we can channel maximum funds to where they are needed the most. We have also streamlined our own application and monitoring processes to make applications for funding easier and to optimise our own resources.

I would like to close by saying a huge thank you to everyone who has supported us, not just during the past 12 months but over the last 20 years. We look forward to working in partnership with you even more closely in the future so we can continue to make a lasting difference to those who need our support the most.

Understanding our county's challenges



We keep our areas of focus under review to ensure we continue to best meet needs across the county.

Sources:
The Suffolk Office of Data & Analytics (SODA), Joint Strategic Needs Assessment (JSNA),
The Office for National Statistics (ONS), Dept of Education (DfE)

2024/25 at a glance

We work with around 1,000 donors who range from individuals and companies to charitable trusts and the public sector. Our collective efforts are creating positive change across Suffolk.



The average grant size was

£4,546



More than 40% of organisations funded had an annual income of less than

£100,000



1,223

grant applications were received



69%

of applications were successful*



840

grants were awarded



279

grants awarded were below £2,000



607

grants awarded were below £5,000



233

grants were £5,000 and over

Please note that these numbers do not include data from the Sizewell C Community Fund.

*The most common reason applications are rejected is because our funds are oversubscribed. This increase in demand is due to the general reduction of charitable giving since Covid 19 and rising costs for charities including NI and energy prices. In addition, there is uncertainty around statutory funding.

State of the Sector

Suffolk's Charity and Voluntary Groups Facing 'Perfect Storm'

Suffolk's charity and voluntary sector is under severe pressure, grappling with rising demand, falling income, and a decline in volunteer numbers. A study carried out by Community Action Suffolk and Suffolk Community Foundation, based on 196 responses, highlights the financial strain and operational issues many Voluntary, Charity, Faith and Social Enterprise (VCFSE) organisations are facing.

The biggest challenge is funding. Many groups report reduced income and rising costs, forcing some to cut services or dip into reserves. Charity Commission data shows Suffolk VCFSE income rose by £6.5m between 2022 and 2023, but expenditure increased by £48.5m. As a result, 44% of survey respondents said their organisation has less than the recommended amount of three-months running costs in reserves, and 7% have no reserves at all.

Most organisations are small, with 72% having an income of under £100,000 annually, and are often run by volunteers or part-time staff. Community Action Suffolk urges organisations to contact them and seek support early if they are in difficulty. At Suffolk Community Foundation, we are also stepping up, encouraging fundholders to offer larger grants and core funding where possible.

The financial crisis coincides with reduced money available for public spending. Over 60% of respondents report increased demand and complexity, with nearly a third delivering services they believe should be statutory. While most are managing, some are raising fees, suspending services, or extending waiting lists. Many are undertaking vitally important prevention work, keeping people safe and healthy and away from GPs, hospitals, police or other services.

Volunteer numbers have also dropped significantly since the pandemic. Although Suffolk has over 223,000 registered volunteers, half of organisations say recruitment and retention have become harder. The volunteer base is ageing, with 64% aged 51+, and 25% over 65. Some volunteers have increased caring responsibilities or have recently returned to work due to a rise in living expenses, meaning the time they have available to help is reduced.

Click [here](#) to view our full report.

"Many charities increased their service provision during the pandemic when more funding and volunteer help was available,"

says Hannah Bloom, Chief Executive of Suffolk Community Foundation.

"Both have since decreased significantly, yet the demand for charitable services is increasing, which has caused a squeeze for many wonderful voluntary organisations in our county."

The message is clear: Suffolk's charities are resilient, but they need urgent support delivered locally to continue serving their communities.



Supporting local lives:
Hadleigh Men's Shed



Supporting local lives:
RDA Woodbridge

Our highlights 2024/25

Suffolk Community Foundation continues to work hard to make a positive impact through collaboration and community support for those who need it most.



Surviving Winter Appeal launched

Suffolk Community Foundation launched its 14th annual Surviving Winter Appeal to raise vital funds to help vulnerable older people to stay warm and well when the cold weather hits.

The campaign took on additional importance this year as an estimated 90% of older people living in the county lost their winter fuel payment following changes to government policy. This also meant that funds could not be raised by asking people who did not need the payment to consider donating it to help others instead.

Despite this, the Appeal raised a staggering £104,000, which directly benefitted 108 households, as well as 10 organisations, all of which support older people.



THE LAUNCH TEAM
In aid of the Surviving Winter Campaign

ICE PROFESSIONAL ADVISERS NETWORKING EVENT



Professional Adviser networking event

In October, we welcomed 70 guests to our professional adviser networking event, kindly sponsored by Kingsfleet Wealth and Greene & Greene.

We enjoyed a delicious buffet lunch provided by ICE Restaurant and heard from Amanda Bloomfield, of Gatehouse Caring charity in Bury St Edmunds about the difference support from our Surviving Winter appeal can make for older people.

Edward and Ivy Rose Hood scholars start at University of East Anglia

The Edward and Ivy Rose Hood Fund, set up in memory of a couple from Lowestoft who believed that everyone should be given equal opportunities to succeed in life, offers six scholarships in computing sciences and engineering.

The scholarship programme generously supports students with a Suffolk connection on a degree in University of East Anglia's School of Computing Sciences or School of Engineering. It was a pleasure to meet the students and to find out the difference the scholarship makes to them.



HOOD SCHOLARS

First round of Sizewell C Community Fund grants announced

Sports clubs, advice agencies and community facilities were among the very first organisations to receive financial support from the Sizewell C Community Fund.

£300,000 was awarded to nine organisations in the first round of funding with grants ranging from £2,000 to £170,000 for groups across East Suffolk.

Organisations included Citizens Advice East Suffolk, which received £170,000 to recruit, train and co-ordinate volunteers to provide advice to local residents, and Young People Taking Action (CYDS) which received £19,036 for youth engagement and outreach work. For more information about the fund, please go to [page 14](#).



HANNAH BLOOM

Hannah Bloom becomes Chief Executive

Hannah Bloom became Chief Executive in February 2025. Hannah joined the Foundation in March 2024 as Director of Philanthropy and Engagement, bringing with her extensive charity and voluntary services experience after spending more than twenty years working in the sector.

Hannah has held senior positions with St Elizabeth Hospice, East Anglia's Children's Hospices and Age UK Suffolk, which have given her a strong understanding of the challenges facing local charities and the difference that organisations such as Suffolk Community Foundation can make.

Annual Review and High Sheriff's Awards – celebrating 20 years

More than 250 charity representatives, voluntary workers, community champions, donors and business leaders learnt more about the work of Suffolk Community Foundation at a special event for our 20th anniversary year.

Our Annual Review and High Sheriff's Awards was held at the Apex, Bury St Edmunds. The afternoon was compèred by Mark Murphy and saw keynote speaker Gavin Stone, former Chief Executive of 4YP, outline some of the issues faced by young people in Suffolk.

Guests were also treated to a performance by Suffolk Philharmonic Orchestra, after which High Sheriff 2024-25 Yvonne Gilchrist-Mason DL presented awards to Restore Women's Aid, Headway Suffolk, The Nest Farms and Ipswich Outreach. A special film was also shown celebrating the past two decades of Suffolk Community Foundation and the impact it has achieved across the county.



ANNUAL REVIEW AND HIGH SHERIFF'S AWARDS



Suffolk Futures

Set up to mark our 20th anniversary, Suffolk Futures is a new fund supporting organisations which work with 16-25 year olds, helping them to address issues with mental health, education, access to housing and employment.

We set an ambitious target of raising £200,000 which we match funded by 50% from a legacy gift. We are delighted that, thanks to the generosity of individuals, businesses and support from the public sector, we exceeded this target. This has created a fund worth over £340,000 which will be available to charities and voluntary organisations in the latter part of 2025. We wish to thank everyone who contributed.

Our highlights 2024/25 continued...



MEET THE FUNDER EVENT

Meet the Funder events

We held two Funding and Community Engagement events at East Suffolk House in partnership with East Suffolk Council. We were joined by representatives from The National Lottery Community Fund, The National Lottery Heritage Fund, Suffolk County Council and Community Action Suffolk, each of whom delivered presentations on current funding opportunities and the support available. Over 85 people attended across the two sessions.

Suffolk 100 event

We hosted our annual Suffolk 100 event at the Burnt House Vineyard near Stowmarket, generously sponsored by RBC Brewin Dolphin and Birketts.

Established over 10 years ago, Suffolk 100 is a giving circle where members donate £1,000 annually to help us to respond to local need, and support charities working in Suffolk. It is vital to help with our core activities and enables us to develop new areas of work.



SUFFOLK 100 EVENT



SUFFOLK MEDAL RECIPIENTS

Suffolk Medal and Suffolk Day

Five individuals who have made a positive and lasting difference to local people and their quality of life were awarded the coveted Suffolk Medal on Saturday 21st June.

The recipients: Phil Aves, Wilfrid George, Andrew Harston MBE, Mark Pendlington DL and Bishop Martin Seeley were presented with their medals during a ceremony in Lowestoft to mark Suffolk Day, which brings together schools, businesses, families and residents to celebrate the people, places, traditions and institutions which make the county so special.

Suffolk Community Foundation joins Open and Trusting Grantmakers

We are delighted to have joined the Institute for Voluntary Action Research (IVAR) as an Open and Trusted Grantmaker. By signing up to this community, we continuously work towards each of their eight commitments to illustrate how we work with and fund charities in an open and trusting way.



Women & Girls' Giving Circle Impact Drinks

In June, donors to the Women & Girls' Fund came together to hear about the incredible impact their regular giving has made. Since the fund's creation in 2013, the Women & Girls' Fund has awarded £124,000 in grants and built a £95,000 endowment fund.

These funds have powered vital initiatives focusing on early intervention, crisis prevention and education which have helped tackle issues like domestic and sexual abuse, mental health challenges, parenting struggles and social isolation.

Guests were given an overview of the 17 organisations supported this year – each one making a meaningful difference in their communities.



WOMEN & GIRLS' FUND IMPACT DRINKS



UNSCENE SUFFOLK

Birketts' Charitable Fund £250,000 milestone

Birketts created their endowed fund in 2006 and was our first corporate fundholder. This year, it reached the incredible milestone of having awarded £250,000 in grants to over 100 local charities and has built an endowed fund of £210,000.

We work with a panel of staff to award grants each year and arrange visits to funded projects. Amy Austin, fund panel member, visited Unscene Suffolk which is a theatre company for adults with visual impairment.

Public Sector Funds

Suffolk Police & Crime Commissioner's (PCC) Fund

Grants are awarded to support services that help reduce crime and disorder, while providing vital assistance to victims. Over the past year, 18 grants have been awarded to organisations including Murrayside Community Development, which expanded activities and support for young people at its Ipswich community centre.

Digital Inclusion Fund

Tackling digital poverty and its impact across key communities in Suffolk, the funding has been made available by Suffolk County Council and CityFibre, in partnership with Suffolk Community Foundation. Over the last year the fund has awarded 11 grants.

Serious Violence Duty Fund

The fund aims to prevent and reduce serious violence, improve life opportunities for young people, and promote safer communities. Made possible by the Home Office, the fund supported 15 interventions in its first year.

Suffolk Carers Fund

Created in 2017 and funded by Suffolk County Council, this fund has awarded 99 grants totalling £1.57m to 44 organisations. It supports carers countywide, reducing isolation and anxiety, offering ongoing help beyond caring duties, and inspiring volunteering and shared experiences that create lasting, positive ripple effects.



Police & Crime Commissioner Tim Passmore visiting MENTA (Mid Anglia Enterprise Agency)'s Skills for Success project in Lowestoft, along with representatives from Breheny Civil Engineering and local police.

Cancer Community Partnership Fund

This fund aims to increase the proportion of people diagnosed with early-stage cancer. Made possible by the Suffolk & NE Essex Integrated Care Board (SNE ICB), the funding has supported local charities such as Cancer Support in Suffolk.

Household Support Fund

Suffolk Community Foundation managed the distribution of Household Support Funding to more than 65 organisations this year. Over 2,900 households experiencing hardship received grants to help meet their essential needs.



Since inception in 2005,
we have awarded **11,740**
grants to

3,400

local charities and
community groups.

How we've helped: *Case studies part 1*

These stories from the organisations we support highlight the impact of our funding throughout the county.

CASE STUDY: Food & Drink Fund

The Food & Drink Fund, established in 2018, was created to improve health and wellbeing across Suffolk by tackling the root causes of food inequality. By harnessing the power of collective giving, the fund has supported a wide range of local charities and community groups, helping them deliver impactful projects that promote better nutrition and healthier lifestyles.

Grants have focused on initiatives that support access to nutritious food, encourage healthy cooking and eating habits, and raise awareness of food-related health issues—particularly among children and young people. Through this work, the fund continues to make a meaningful difference in communities across the county.

The fund has awarded 167 grants totalling more than £502,000 over the past seven years.



Feedback from REACH Community Projects
Cookery Classes funded by the Food & Drink Fund:

One participant, supported by a member of the team over several months, lives alone and experiences significant anxiety in social situations. Prior to joining the sessions, they hadn't cooked since school and relied mostly on fast food and microwave meals. They also face long-term health challenges and had been out of work for some time.

They joined the programme primarily for social interaction and shared that they felt safe and able to be themselves during the sessions. Cooking was a completely new experience, which they found surprisingly enjoyable. Staff observed a noticeable improvement in their mental wellbeing, and the participant has continued to use the skills learned at home.

“It was amazing to understand with the instructions. Everyone was so welcoming and kind. I came to these sessions to step out of my comfort zone and learn how to cook on a budget. I've been struggling with food shopping and wanted to learn how to buy cheap ingredients but still make lovely meals. I spend too much money. Thank you so much. It's been amazing. I've learnt so much.”

PARTICIPANT FEEDBACK

Sizewell C Community Fund

This fund will provide up to £23m over the next decade for charities, community groups and social enterprises which are delivering projects that benefit local communities in East Suffolk.

The focus of the fund is on reducing the impact of the construction of Sizewell C nuclear power station and leaving a legacy of benefit in the most affected communities. By addressing the economic, environmental and social needs of local residents, the fund aims to enhance quality of life and wellbeing.

Priority will be given to projects that:

- benefit communities located closest to the development and activity sites
- show the greatest potential for reducing the longer-term effects of Sizewell C construction activity
- are supported by the wider community
- provide a positive and sustainable legacy
- bring people together in the community

Over the next decade, Sizewell C activity will impact different communities at different times, and the Community Fund will respond to this appropriately by remaining agile and responsive.

Awards

Since opening in July 2024, there have been four funding rounds with 36 awards totalling just over £2.6m. Of this, almost £2m has been awarded to 25 organisations supporting the most impacted community of Leiston-cum-Sizewell where the power station is being constructed.

An independent awards panel makes decisions on applications and includes local residents and representatives from Sizewell C, East Suffolk Council, Suffolk County Council and Suffolk Community Foundation.

“On behalf of the swimming club and the committee members, we would like to thank you for all of your help, advice and guidance throughout the application process. We are really grateful to have been awarded the full grant amount, and we wish to extend our heartfelt gratitude.”

BUDDY LAMB

LEISTON & DISTRICT SWIMMING CLUB



Photo by: Andrew Hendry

Leiston & District Swimming Club

Project Name: Multi-stranded club improvement and expansion project – £89,380 awarded over 3 years

Location: Leiston and surrounding areas

Summary: The organisation has been bringing people together to enjoy swimming and its health benefits in Leiston for over 30 years. The team used its deep knowledge and understanding of the community to identify how Sizewell C Construction will impact local residents and demonstrated how investment into the club would expand and enhance its offering to leave a legacy of benefit in Leiston.

The funding was sought to enable a wide-reaching programme of improvements for the club including purchasing equipment for use by members in the pool, new timing apparatus, a website re-design, the creation of a ‘masters’ adults swim session and hiring a swim director, benefitting both the swimming members and the volunteer coaches.

How we've helped: Case studies part 2

CASE STUDY: The Befriending Scheme



The Befriending Scheme empowers vulnerable people, by giving them the skills to make informed decisions about their own lives.

Its work reduces isolation and assists people and families to become less dependent on carer support, particularly during pivotal or transitional periods. **The Befriending Scheme was awarded £10,000** from the Catalyst Fund to support its core costs in providing social and emotional support.



"I felt useless... like I had nothing left to offer." Olive, who is in her mid-60s, was referred to its Community Care Farm. Following multiple strokes, she became physically disabled and unable to work, which led to severe depression and hospitalisation. Traditional mental health services had failed her: "I never knew who I'd be speaking to next. I kept repeating my story and felt no one was really listening."

Initially sceptical about joining the mental health support group, Olive admitted she was guarded: "I'd been sent to so many groups before that didn't help." But things changed quickly. "After a few visits I started to relax. Everyone was a real giggle, and I found tasks I could do despite my limitations!"

Olive began forming friendships: "I exchanged numbers with someone and we'd chat weekly, meet for coffee monthly. Talking to people who understood was liberating." Her confidence grew, and she now volunteers supporting adults with learning disabilities.

"Volunteering makes me feel part of a community. I feel valued again - even my husband volunteers now!"

CASE STUDY: Brighten the Corners



Based in Westgate ward, Ipswich, one of Suffolk's most deprived and diverse wards, Brighten The Corners was set up to engage and inspire local people, giving them a safe and stimulating environment to learn music and media, make new friends and grow in confidence.

Brighten The Corners' aim is to boost self-esteem and group working as well as interpersonal and social skills and provide pathways to employment and volunteering opportunities. **Its Tune Up project received £10,000** from the Bluebell Fund to provide 'green shoots' learning, mentorship and opportunities for young people in the live events industry.



"Being a huge music fan, the chance to see what happens behind the scenes at gigs and festivals really appealed to me. I struggle deeply with mental health issues, so I had reservations about joining and meeting new people but I took my chance, and I'm eternally proud of myself for doing that.

I was taught everything from booking a band to refilling crisps as artist liaison at a big festival. In ten weeks, I went from being a lonely teenager idolising artists in my bedroom to gaining real-world experience within the team.

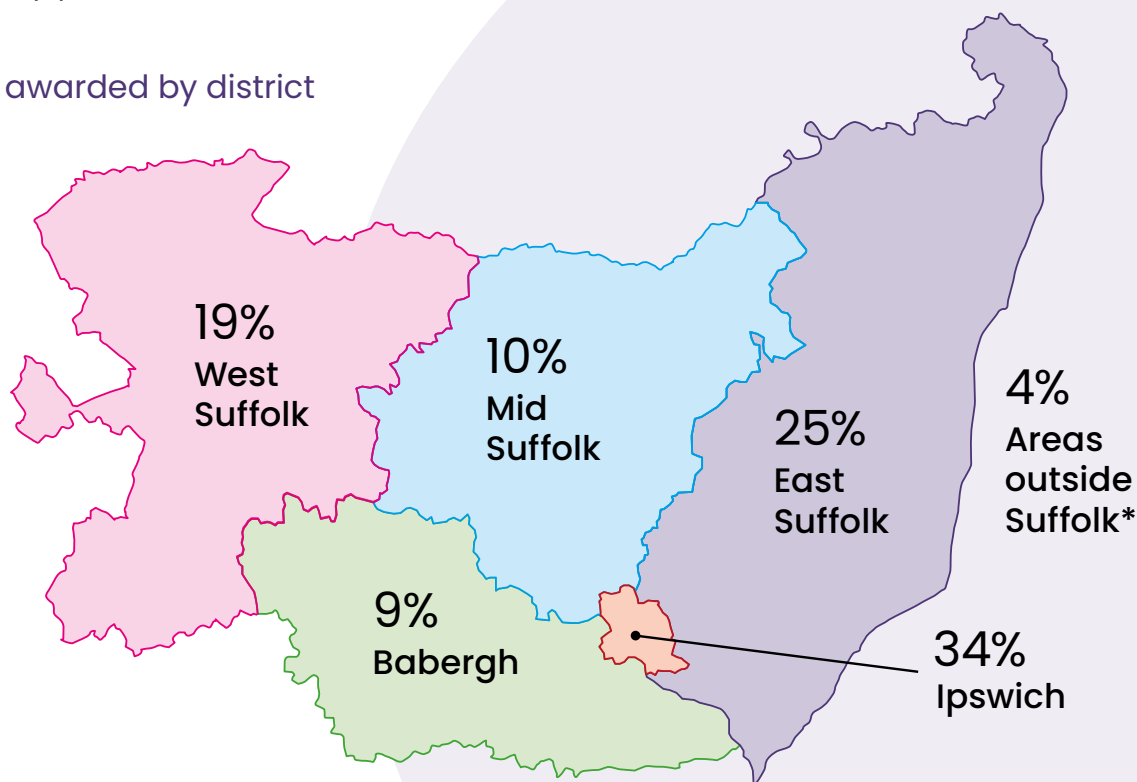
After weeks of mentoring, I decided to shoot an arrow in the dark and start my own independent promotion company. From signing up to volunteering at festivals like First Light, it's been nothing less than an awakening. I now know what I want to do with my future and how I enjoy spending my time.

This experience has genuinely changed me. I've moved away from my introverted, reclusive past self and now have enough confidence to talk to new people, even on stage in front of a crowd!" Liam.

Organisations supported

We would like to thank all our donors, grants panel members and Voluntary, Community, Faith and Social Enterprise (VCFSE) partners for working with us to support and enhance lives in Suffolk.

Grants awarded by district



- | | | | |
|---|---|---|--|
| <ul style="list-style-type: none"> • 1379 (Leiston) Squadron RAFAC • 1st Gunton Brownies • 1st Leiston Scout Group • 1st Saxmundham Scout Group • 29th Ipswich Guides • 4th Bungay Guides • 5th Woodbridge Sea Scouts • Abbeycroft Leisure • ABC Radio • Access Community Trust • Ace Anglia • Action for Children • ActivLives • Acton Good Neighbour Scheme • Adult Social Care, Suffolk County Council • AFC Sudbury • Age UK Norwich • Alde Valley Suffolk Family History Group • Aldeburgh Jubilee Hall • Aldeburgh United Charities | <ul style="list-style-type: none"> • Alumah • Anglia Care Trust • Art for Cure • Asperger East Anglia • AYC Schools SailingTrust • Babergh and Mid Suffolk Council • Back In The Groove • Bags of Taste • Be Me Like We • Beccles Medical Centre • Beccles Parish • Benefice of Kesgrave, Little Bealings & Playford • Bike Active North Suffolk • BME Suffolk Support Group • Botesdale PPG • Bows & Arrows • Brandon Happy to Sing Choir • Brave Futures • Breast Friends • Bridge Community Church • Britten Pears Arts • BSC Multicultural Services | <ul style="list-style-type: none"> • Bungay Community Support • Bungay Town Council • Burlington Baptist Church • Burstall Parochial Church Council • Bury Drop In • Bury St Edmunds Men's Shed • Bury Town Pastors • Cancer Support Suffolk • Capel Parish Nurses • Caribbean and African Community Health Support Forum • Catalyst Counselling • Catch22 Suffolk Positive Futures • Child Brain Injury Trust • Children's Community Learning Disability Nursing Team • Christ Church Felixstowe • Christian Youth Ministries • Church of St Mary Magdalene, Debenham | <ul style="list-style-type: none"> • Citizens Advice East Suffolk • Citizens Advice West Suffolk • Classics for All • Cohere Arts • Combat2Coffee • Communities Together East Anglia • Community Action Suffolk • Community Tech Hub • Compassion • Cook Church (Metfield PCC) • Cransford Village Hall • Creative Leiston • Curwen Print Study Centre • DanceEast • Daws Hall Trust • Disability Advice NE Suffolk (DANES) • Disability Advice Service (East Suffolk) • Dora Brown • East Anglia's Children's Hospices |
|---|---|---|--|

- East Suffolk and North Essex NHS Foundation Trust
- East Suffolk Council
- Eastern Angles Theatre Company
- Easton & Letheringham Village Hall Management Committee
- Eden's Project
- Elmsett and Aldham Community Shop
- Emmaus Suffolk
- Ending Life's Taboo
- Epic Dad
- Euston Church
- Eyes Open
- Families Together Suffolk
- Felixstowe Area Community Transport
- Flutter
- FoodCycle
- Forge Community Church
- Free Food In Haverhill
- Freedom Church
- Fresh Start Charity
- Fresh Start Future Enterprises
- Future Female Society
- Game Anglia
- Gatehouse Caring in East Anglia
- GoStart Community Transport
- Great Barton Free Church
- Green Light Trust
- Gt Barton Free Church
- Hadleigh Men's Shed
- Halesworth Volunteer Centre
- Happy Days Children's Charity
- Haverhill Community Trust
- Headway Suffolk
- Healthwatch Suffolk
- Hertfordshire Hearing Advisory Service
- HighTide Festival Productions Ltd
- Hive Sudbury
- Home-Start in Suffolk
- Hope After Suicide Loss
- Hope Church Ipswich
- Hope for Tomorrow
- Hope Trust
- Horizon School, Lowestoft
- Hour Community
- Hourglass (Safer Ageing)
- Hypo Hounds

- I Made This
- Icení Ipswich
- Iken Parochial Church Council
- INK Festival
- Innov8 Workshops
- Inside Out Community
- Inspire Counselling and Training
- Inspire Suffolk
- Integrated Community paediatric service
- INVOLVE Active
- Ipswich & District Citizens Advice
- Ipswich Borough Council
- Ipswich Community Media and Learning
- Ipswich Dementia Action Alliance
- Ipswich Housing Action Group (IHAG)
- Ipswich Outreach Bus
- Ipswich Romanian Community
- Ipswich Sports Club For The Disabled
- Ipswich Town Community Foundation
- IPSWICH17 Good Neighbour Scheme
- It's On The Ball - Testicular Cancer Charity
- Just42
- Karibu African Women's Support Group
- Kelsale-cum-Carlton Parish Council
- Kernos Centre
- Kids Inspire
- Kids Kitchen Collective
- Kinda Education
- Landseer Road Methodist Church
- L'Arche Ipswich
- LEAPS Suffolk
- Leiston & District Swimming Club
- Leiston Book Festival
- Leiston Youth and Community Angling Society (LYCAS)
- Leiston Youth Club
- Leiston-cum-Sizewell Town Council
- Let's Talk Reading
- Level Two Youth Project
- Level Water
- Lighthouse Women's Aid
- Limitless Futures
- Little Lifts
- Livability
- Lofty Heights
- Lowestoft & District Mencap Society
- Lowestoft and Waveney Breastfeeding Support
- Make Them Smile
- Making Fitness Accessible
- Memories are Golden
- Men's Advice Recovery Support (MARS)
- Mid Anglia Enterprise Agency (MENTA)
- Mid Suffolk Rotary
- Mid Suffolk Voluntary Organisations Forum
- Mildenhall Town Youth Football Club
- Mind Body and Sea
- MN Well-Child Support
- Morabe Rural Music
- Murrayside Community Development
- Music in Our Bones
- Nacton & Bucklesham Under 5's
- Nacton Cricket Club
- Nacton Village Hall
- Natural Habitat
- New Life Church Community Great Cornard
- Newmarket Integrated Community Health and Care Team
- Newmarket Open Door
- Newmarket Pony Academy (part of The British Racing School)
- Norfolk & Suffolk NHS Charitable Foundation Trust
- Norfolk and Suffolk 4x4 Response
- Northgate High School
- Norwich City Community Sports Foundation
- NSPCC
- Oasis English Language School
- Orchard House Surgery

- Orford CEVAP School
- Orford Museum
- Ormiston Families
- Orwell Housing
- Orwell Mencap
- Our Special Friends
- Outreach Youth
- PACT Parents and Carers Together
- Papworth Trust
- Parish of Ipswich: St Helen with St James
- Parish of St John with St Edmund, Felixstowe
- Pathways Care Farm
- Peasenhall Parish Council
- Petals
- PHOEBE
- Phoenix - Suffolk Community Marchers
- RaBBaTs (Rickingham and Botesdale Baby and Toddler Group)
- Racing Welfare
- Raedan Trust (Suffolk)
- Raedwald Trust
- REACH Community Projects
- Redlingfield Parish Meeting
- Restitute
- Restore Women's Aid
- Riding for the Disabled (Woodbridge & District Group)
- Ringsfield & Weston Recreation Ground
- Risby Village Hall
- River Church Ipswich
- Robert Mayes Charity
- Rock Paper Scissors Arts
- Rotary Club of Stowmarket Gipping Valley
- Royal National Mission to Deep Sea Fishermen
- Rural Coffee Caravan
- Rushmere St Andrew Parish Hall



Organisations supported continued...

- Samuel Ward Academy
- Saxmundham and District
- Saxmundham Music and Arts
- School Nursing team, Suffolk County Council
- Schoolreaders
- Second Chance Stroke Group
- Selig (Suffolk) Trust
- Shaftesbury Icanho
- SHAKE Festival
- Shepherd Drive Baptist Church, Ipswich
- Shine Bury St Edmunds
- Simple Norfolk
- Sims Hill Shared Harvest
- Slaughden Sailing Club
- SLM Community Leisure Charitable Trust
- Snape Primary School
- Solo Housing (East Anglia)
- Spinning Wheel Theatre
- Sporting 87 Football Club
- Spot Wellbeing
- St Andrews Church, Sudbury
- St Andrews Pre School, Felixstowe
- St Edmundsbury Newstalk Association
- St Elizabeth Hospice
- St John the Baptist Church Saxmundham
- St John the Baptist, Campsea Ashe
- St John's Church, Beck Row
- St John's Methodist Church for St John's Community Team, Sudbury
- St Lawrence Church, Great Walldingfield
- St Mary and St Botolph, Whitton
- St Mary's Roman Catholic Church, Thetford
- St Matthew Church, Ipswich
- St Nicholas Hospice
- St Peters Church, Ipswich
- St Luke's Church, Beccles
- St Mary's Stoke Parochial Church Council
- Stanton Football club
- Stanton PCC
- Status Creative
- Stoke High School
- Stour Valley Vineyard Church
- Stowmarket Lawn Tennis Club
- Stowmarket Relief Trust
- Stradbroke Tennis Club
- Street Forge Workshops
- Sudbury & District Citizens Advice
- Sudbury Canoe Club
- Suffolk Artlink
- Suffolk County Council
- Suffolk County Schools' FA
- Suffolk Family Carers
- Suffolk Football Association
- Suffolk Historic Churches Trust
- Suffolk Law Centre
- Suffolk Mind
- Suffolk Preservation Society
- Suffolk Refugee Support
- Suffolk Sight
- Suffolk Survivors of Bereavement by Suicide
- Suffolk Wildlife Trust
- Survivors in Transition
- The Art Station
- The B&B Young People's Theatre Group
- The Befriending Scheme
- The Chorus Schools Federation
- The Christopher Centre
- The Compass
- The Country Food Trust
- The Country Trust
- The Cyber Helpline
- The ERD Connection T/A Stowmarket Youth
- The Family and Community Network
- The Food Museum
- The George Community Pub
- The Hive Ipswich
- The Hygiene Bank
- The Lightwave Community
- The Living Paintings Trust
- The Loft Youth Centre
- The Mindful Life Group
- The Mix Stowmarket
- The Nest Farms
- The Offshoot Foundation
- The Parochial Church Council of the Ecclesiastical Parish Of St Augustine, Ipswich
- The Pear Tree Fund
- The Racing Centre
- The Rob Clarke Community Trust
- The Seagull Lowestoft
- The Stone Foundation
- Thurston Cadet Trust
- TOPCATS
- Transforming Futures - Suffolk
- Union Romani Voice
- Unity Schools Partnership
- University of East Anglia
- University of Suffolk
- University of Suffolk Dental
- Unscene Suffolk
- Voices for Gainsborough Community Library
- Voluntary Network
- Volunteering Matters
- Walton Parish Nursing
- Wardens Trust
- Warren Association Trust
- Waveney Deaf Children's Society
- Waveney Domestic Violence & Abuse Forum
- Waveney Gymnastics Club
- West Disabled Children and Young People's Team
- West Suffolk Council
- Wickham Market Partnership
- Women Like Me
- Woodbridge Climate Emergency Centre
- Woodbridge Cricket Club
- Woodbridge Rotary Club
- Woolverstone Project
- Worlingham Community Facility
- YANA
- YMCA Trinity Group
- Young People Taking Action
- Youth Sailing at Felixstowe Ferry
- Zebras Children and Adults Charity

If you would like to know more about how we can support your organisation, please contact our Grants Team on:

T: 01473 602 602

E: grants@suffolkcf.org.uk



The Suffolk Community Foundation Grants Team

How we've helped: Case studies part 3

CASE STUDY: Families Together Suffolk



Families Together Suffolk gives free support to families with children under 12 across Suffolk, offering help with mental health, relationships, behaviour and child development.

It specialises in mental health and SEND support, providing local, empathetic guidance to help parents feel more confident and less isolated. **Its perinatal mental health Moving On Group received £2,000** from a private fund, for mothers who are still experiencing postnatal depression, low mood and anxieties one year on, and their babies.

Ellie's baby, Zara, was born prematurely, which heightened Ellie's existing anxiety. Concerned about

illness, she avoided leaving the house and limited contact with others. With no local friends and only work colleagues without young children, Ellie became increasingly isolated and frequently contacted health professionals over minor concerns. Recognising her anxiety, her Health Visitor referred her to Families Together.

Despite initial hesitation about Zara sharing toys, Ellie agreed to come along. To build confidence, they began with short walks, which Ellie found helped both her wellbeing and Zara's sleep. It took a little while but she gradually engaged with other parents. During one messy play session there was a turning point: she allowed Zara to join in, marking the start of more relaxed interactions.

After ten months, Ellie was noticeably more confident, now attending playdates, offering advice to new parents, and then returning to work part-time. Her reliance on medical reassurance has reduced significantly, as she now turns to her new support network. Ellie says that early intervention has transformed her experience of parenting, creating a happier second year for both her and Zara.

CASE STUDY: innov8 Workshops



innov8 Workshops provides wellbeing, vocational skills and mentoring to help 5-18 year olds who are finding school life a challenge.

It supports young people to build self-determination, and confidence to help them achieve positive outcomes and

improved prospects in life. **The Suffolk Police & Crime Commissioner's Fund, amongst others, supported innov8's work with a £40,000 grant.**

Pete faced significant challenges from an early age. Persistent bullying at school led to exclusion risks and by the age of 12 he had joined a gang, seeking protection but exposing him to drugs and violence. Family instability compounded this – his father, previously a stabilising influence, was sentenced to



24 years in prison for attempted murder and his mum was struggling with alcohol addiction. Relationships at home had deteriorated and, without parental guidance, Pete became vulnerable to harmful influences. He openly shared that cannabis use from the age of 14 helped 'soothe the stress' in his life.

Pete also lives with dyslexia and Global Development Delay, making mainstream education difficult. When he first came to innov8, he admitted feeling daunted and said he "doesn't like new places." Today, he says

"innov8 is a safe space to gain new knowledge and skills."

Pete has discovered a passion for music, recording eight original tracks and performing live on Radio West Suffolk. He also engages in outdoor workshops, learning horticulture and fishing. innov8 has helped Pete build confidence and positive relationships as well as giving him a sense of belonging. His progress demonstrates the transformative impact of innov8's tailored support and creative opportunities for vulnerable young people.

Introducing the Philanthropy Team

The Philanthropy Team is responsible for donor stewardship and income generation. They ensure that every donor feels valued, appreciated and deeply connected to the impact they help to create.



Fran Wright
Philanthropy Manager

Fran joined SCF in November 2024 after 15 years at Essex Community Foundation. Her extensive experience underpins her role in working with our donors and fundholders and guiding our professional advisers.



Katie Read
Philanthropy Assistant

Katie joined SCF in December 2024 following a long and varied career in the VCFSE sector in Suffolk. Her role is largely to offer administrative support whilst also being available to help with donor care and event planning.



Lucy Pembroke
Campaigns Manager

Lucy joined SCF in January 2025 having spent 16 years in educational fundraising. Her role includes the management of our fundholders and giving circles, while also leading on the planning and delivery of key events.

Why Give Through Us

We work with a generous network of individuals, families, businesses and charitable trusts who are passionate about making a positive impact in areas like health, social justice and inclusion. With our local insight and experience, we ensure their support is delivered safely, efficiently and with full compliance.

- We are the local experts in charitable giving with a deep understanding of the county's issues.
- We recognise the challenges facing the voluntary sector and act as an ambassador and convener.
- We offer a personalised and tax-efficient way of giving and can treat donations anonymously if the donor prefers.

“I'm so proud that, through our East of England Co-op Community Cares Fund with Suffolk Community Foundation, we can support all these local groups that work so hard to make a real difference.”

EAST OF ENGLAND CO-OP

How to Give Through Us

Our experienced team can guide you every step of the way, helping you make informed, personalised decisions that align with your charitable goals.

Set up your own fund – this allows you to choose the cause and projects you wish to support. This can be set up as either an invested fund or a flow through fund.

Leave a gift in your Will – a legacy in your Will helps your local community in the future as well as being tax efficient.

Support a campaign or join a giving circle – by pooling donations, you can have a bigger impact.

Help the core activities of the Foundation by giving to our Suffolk Fund or joining Suffolk 100.

Sponsorship – we organise several events and print publications which require sponsorship each year.

Trust Transfers – if you are involved with a charitable trust which is dormant, inactive or are concerned about succession, we can help to offer a tailored solution to help revitalise its impact.

If you, or your professional adviser, would like to know more about giving through Suffolk Community Foundation, please contact:

Fran Wright
E: fran.wright@suffolkcf.org.uk T: 01473 944 732

Lucy Pembroke
E: lucy.pembroke@suffolkcf.org.uk T: 01473 786 919

The lasting legacy of a gracious philanthropist

A community champion, who played a vital role in the creation of Suffolk Community Foundation, sadly passed away this year, leaving behind a powerful legacy through her family fund with us.

Claire Horsley DL, who established an endowed fund in 2012 alongside her husband Paul Willcox, was passionate about supporting local groups, particularly those working in disadvantaged areas or with the most vulnerable in our communities.

Claire was intentionally discreet about her charitable giving, never wanting or expecting recognition. The fund was originally called the Evdemonia Fund until Claire's death, when Paul chose to rename it the **Claire Horsley Fund**.

Since its creation, the fund has awarded grants supporting a wide range of local charities and projects that reflect Claire's values and interests. These include a singing group for stroke survivors and their families and a theatre project for young people with special educational needs and disabilities.



“Claire was a truly beautiful soul who was an extraordinary and graceful contributor to public life. She was an avid volunteer, giving time to many different charities, latterly serving as a Deputy Lieutenant. While Claire chose to act discreetly, her impact has been loud and long-lasting.”

LADY CLARE, COUNTESS OF EUSTON

HM LORD LIEUTENANT OF SUFFOLK AND PATRON OF SUFFOLK COMMUNITY FOUNDATION

“Let me say, unequivocally, that without her energy and drive at that time, we might never have made the Foundation we are all so proud of today.

Her contribution was immense. Suffolk has become a richer and better place thanks to Claire. She was a real life-enhancer.”

DAVID SHEEPSHANKS CBE DL

FORMER SUFFOLK COMMUNITY FOUNDATION CHAIR AND HONORARY LIFE PATRON

“Claire was very passionate about helping people and got so much happiness from seeing our fund make a positive difference. It is a comfort to know it is being managed by professionals who care about what is important to us as a family, and that we will continue to award grants in Claire's name for years to come. We hope by talking about our fund, it inspires others to do the same.”

PAUL WILLCOX

If you would like to discuss how you can leave a legacy to the county or how a fund could benefit you or someone you know, please contact Fran Wright.

How we've helped: Case studies part 4

CASE STUDY: Compassion



Compassion provides a vital source of support for all survivors of domestic abuse, both current and historic.

Its wide-ranging support is provided free to all victims, irrespective of gender or age, to help them process trauma and guard against future abusive relationships, with a direct impact on reducing repeat victimisation. **It received several grants including a £2,000** grant from the High Sheriff's Fund in support of its work.

"It has been ten years since I was in a physically abusive relationship, yet the effects of that experience have stayed with me, continuing to shape my choices and leading me into relationships with emotionally abusive partners. This course changed everything for me.

The course gave me the awareness and understanding that I had been searching for. It validated my experiences and helped me to let go of the self-blame I had carried for so long. One of the most powerful aspects was being surrounded by other women who truly understood, who had been through similar experiences and could share their stories, emotions, and perspectives. It created a space of connection, healing and deep understanding.

I cannot express enough how much this programme is needed. It provides that validation, that awareness, that space for healing. It is truly life-changing." Tracy

CASE STUDY: Caribbean and African Community Health Support Forum



The Caribbean and African Community Health Support Forum (CACHSF) tackles health and wellbeing issues that disproportionately affect Caribbean and African communities.

By delivering culturally appropriate health information, these communities are helped to access the support they need. **As part of the Equity in Mind project, CACHSF were awarded a grant of £30,000.**

During the Tell Your Story collaboration with Ipswich Community Library, participants were invited to begin writing their own stories. Denzel shared a deeply personal account of his life as a single father, describing the challenges of everyday parenting, from park visits to styling his daughter's hair, while coping with the emotional strain of living far from his brother, who had contemplated suicide.

Denzel's openness inspired others in the room to share their experiences, including one man who spoke for the first time about losing his son and later expressed gratitude for being heard. Regular meetings have since created a safe, non-judgemental space where men who had only exchanged greetings for years now openly discuss challenges, triumphs and aspirations, with significant positive impact on their mental health and wellbeing.

Funding from 2021 – 2025

The Equity in Mind Fund (EiM), launched in 2021 by the NHS Suffolk and North East Essex Integrated Care Board and Suffolk Community Foundation, aimed to improve outcomes for individuals with, or at risk of, serious mental illness by investing in community-led mental health support.

EiM funded a diverse range of community organisations to deliver interventions centred on individual needs. These reached vulnerable groups, including isolated older people, young adults facing stigma and those with disabilities, through practical support, group activities and connection in safe spaces. The impact was clear: end users reported improved wellbeing, confidence and resilience, with many developing stronger life skills enabling them to break cycles of poor mental health and social isolation.

While early collaboration with statutory services was initially challenging for some, the organisations adapted by strengthening internal networks, partnerships and outreach. Over time, referral pathways improved, with 'warm handovers' from public bodies ensuring more effective transitions and more consistent support.

The multi-year funding enabled organisations to plan ahead, build capacity and invest in staff and volunteers which enhanced the services they could offer and sustainability. EiM's flexible approach encouraged innovation and allowed organisations to focus on what worked best for their communities.

Beyond direct service delivery, EiM helped raise awareness of mental health needs and the value of community-based support. The project has shown that locally rooted, collaborative approaches can transform lives and should be a core part of future mental health strategy and investment.

Click [here](#) to find out more.



Supporting local lives:
Inside Out

“Thanks to this funding and our improved financial stability, we are now in a stronger position to broaden our impact. With this solid foundation in place, we are reviewing and revising our business plan to expand our services into outreach work, to bring our support and services to more underserved communities in and around the Ipswich area.

This new focus will help us reach even more people and make new connections with stakeholders to provide networking and partnership opportunities.”

INSIDE OUT

Funds 2024/25

Thank you to our donors and fundholders. Your generosity enables us to support local community groups working with the most vulnerable across Suffolk.

- Apollo Fund
- Arts and Culture Fund
- AXA Insurance Fund
- Axter Climate & Community Fund
- Barclay Family Fund
- Beacon Commodities Fund
- Beckett Health and Wellbeing Fund
- Birketts Charitable Fund
- Bluebell Fund
- Breakthrough Fund
- Brooks Fund
- Bunbury Family Fund
- Bunting Family Fund
- Cancer Community Partnership
- Caroline, John & Merryn Everitt Fund
- Catalyst Fund
- Centenary Fund
- Claire Horsley Fund
- Clopton Estate Ltd Fund
- Community Inclusion Fund
- Cunliffe Family Fund
- David & Jill Simpson Family Fund
- Davies Family Fund
- Denbury Charitable Fund
- Digital Inclusion Fund
- Dolphin Franklin Fund
- D'Oyly Tarts Fund
- E & J Legacy Fund
- East of England Co-op Cares Fund
- East of England Co-op Pennies from Heaven Fund
- Edward & Ivy Rose Hood Fund
- Ellisons Foundation
- Equity In Mind Fund
- Euston Fund
- Festival of Suffolk Fund
- Fonnereau Road Health Foundation Fund
- Food & Drink Fund
- Frank Jackson Foundation Fund
- Fred. Olsen Community Fund
- Gary Gladwell Sports Fund
- George Vestey Family Fund
- Greene & Greene Foundation
- Harris Family Fund
- Harwich Haven Authority Fund
- Healthy Heart Fund
- Hewlett Fund
- High Sheriff's Fund
- Hill Family Fund
- Hintlesham and Chattisham Harriet Lloyd Fund
- Hodge & Shallow Fund
- Horizon Fund
- Household Support Fund
- Hubble Bubble Fund
- Hughes-Hallett Fund
- Iken Peninsula Fund
- Ipswich School Charity Fund
- Kemball Family Fund
- Kingsfleet Community Fund
- Langlands Fund
- Lentonbrook Fund
- Lovewell Blake Fund
- Lucstu Fund
- Mahony Family Fund
- Marriott Motor Group Fund
- Martineau Care Fund
- Martineau Family Fund
- Maurken Fund
- May De La Rue Fund
- Michael Ben Howes Fund
- Miller Trust Fund

“ I created my Fund with SCF in order to organise my charitable giving better. It has worked really well for me. I have enjoyed learning about new local charities as well as supporting the ones I know well. ”

OAK FUND

- Mitchell Fund
- Oak Fund
- Orpheus Fund
- Pam Winter & Eileen Gobbett Fund
- Pargiter Trust Fund
- Peter & Dorothy Meade Fund
- Peter and Joy Holder Fund
- Peter Rous Fund
- Philipps Fund
- Port Community Fund
- Pound Gates & Sevatas (Acorn Fund)
- PPG Pound Fund
- RJB Fund
- Rowland Family Fund
- RSM Fund
- Rural Community Grassroots Fund
- Sabariah's Fund
- Scarecrow Fund
- Scrutton Bland Fund
- SEH French Ltd Fund
- Serious Violence Duty Fund
- Shadwell Fund
- Sheepshanks Family Fund
- SIFRE Inter-faith Legacy Trust Fund
- Sizewell C Community Fund
- Skinner's Fund
- Stand Up For Suffolk Fund
- STIMULUS Fund
- Stubble Fund
- Suffolk 100 Fund
- Suffolk Building Society Charitable Foundation Fund
- Suffolk Carers Fund
- Suffolk Futures Fund
- Suffolk Giving Fund
- Suffolk Medal Fund
- Suffolk Smokefree Generation Fund
- Suffolk Sports Fund
- Suffolk's Police & Crime Commissioner's Fund
- Surviving Winter Fund



Supporting local lives:
Murrayside Community Centre

- Tattersalls Fund
- Technology Networks Fund
- Transforming Suffolk Loan Fund
- UEA Hood Fund
- Vanneck Fund
- Vestey Group Fund
- Wellesley Wesley Fund
- West Family Fund
- West Le Basse Family Fund
- Wider Horizons (Aldeburgh) Fund
- Wider Horizons (Woodbridge) Fund
- WN Estates Family Fund
- Women & Girls' Fund
- Women's Health CV Fund
- Woodward Fund

In addition, we hold a number of private family funds and receive regular support from businesses, individuals and charitable trusts. We thank them all for their ongoing generosity.

“As ever, we are humbled by the support and backup we get from SCF. They are far more than funders, they are partners in our work of improving the lives of vulnerable people.”

PATHWAYS CARE FARM

Financial overview

for the year ended 30 June 2025

	Unrestricted funds £	Restricted funds £	Endowment funds £	Total 2025 £	Total 2024 £
Income and endowments from:					
Donations and legacies	156,431	5,555,059	339,726	6,051,216	5,545,259
Other trading activities	9,420	4,304	–	13,724	–
Investments	95,893	645,419	–	741,312	712,218
Total income	261,744	6,204,782	339,726	6,806,252	6,257,477
Expenditure on:					
Raising funds	281,173	74,152	39,244	394,569	344,496
CHARITABLE ACTIVITIES					
Grants awarded	153,266	5,950,437	–	6,103,703	3,401,268
Other charitable activities	784,802	20,484	117	805,403	859,811
Total expenditure	1,219,241	6,045,073	39,361	7,303,675	4,605,575
Net gains / (losses) on investments	–	–	(300,931)	(300,931)	1,437,588
Net income / (expenditure)	(957,497)	159,709	(566)	(798,354)	3,089,490
Transfers between funds	721,675	(306,877)	(414,798)	–	–
Net movement in funds	(235,822)	(147,168)	(415,364)	(798,354)	3,089,490
Fund balances at 1 July 2024	681,588	4,155,957	21,722,621	26,560,166	23,470,676
Fund balances at 30 June 2025	445,766	4,008,789*	21,307,257	25,761,812	26,560,166

These financial statements have been prepared in accordance with the provisions applicable to companies subject to the Companies Act 2006 small companies' regime. The financial statements were approved by the Board and authorised for issue on 24 November 2025.

Mr G Vestey DL / Mrs A Hughes
TRUSTEE TRUSTEE

Company Registration No. 05369725 / Registered Charity No. 1109453

Statement by the Trustees

These summarised financial statements are a summary of information extracted from the annual accounts, audited by Azets Audit Services Ltd T/A Ensors, on which the auditors' opinion was unqualified. The full report and accounts were approved by the Trustees on 24th November 2025 and have been submitted to the Charity Commission and the Registrar of Companies. These summarised financial statements may not contain sufficient information to allow for a full understanding of the financial affairs of the charity. For further information, the full accounts, the auditors' report on those accounts and the Trustees' Annual Report should be consulted. Copies of these may be obtained from Suffolk Community Foundation registered office.

* This balance shows the addition of the Sizewell C funding.

Financial overview

as at 30 June 2025

Fixed assets

Tangible assets
Investments
Investment properties

Total fixed assets

Current assets

Debtors
Cash at bank and in hand

Total current assets

Liabilities

Creditors amounts falling
due within one year

Net current assets

Total assets less current liabilities

Creditors: amounts falling due after
more than one year

Net assets

The funds of the charity:

Capital funds

Endowment funds

Income funds

Restricted funds
Unrestricted funds

Total charity funds

2025
£

£

2024
£

£

–

18,675,643

3,035,000

21,710,643

10,168

19,177,833

3,035,000

22,223,001

1,191,009

5,620,087

6,811,096

682,407

4,542,706

5,225,113

(2,116,510)

(783,948)

4,694,586

4,441,165

26,405,229

26,664,166

(643,417)

(104,000)

25,761,812

26,560,166

21,307,257

21,722,621

4,008,789

445,766

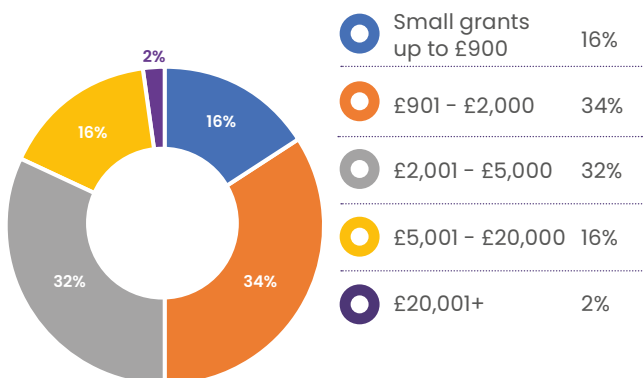
4,155,957

681,588

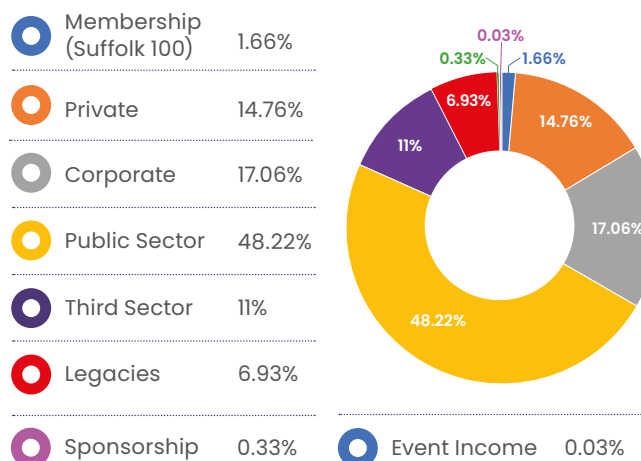
25,761,812

26,560,166

% Grants awarded by size 2024/25



Income source 2024/25



Our people – trustees, patrons and staff

Suffolk Community Foundation is powered by the passion and dedication of our trustees, patrons, and staff. They work together to make a real difference, helping us support and strengthen communities across Suffolk.

Patrons

Clare, Countess of Euston CVO
HM Lord Lieutenant of Suffolk

Rachel Kearton
Chief Constable, Suffolk Constabulary

Gulshan Kayembe DL
2025/26 High Sheriff of Suffolk

The Rt Revd Joanne Grenfell
Bishop of Edmundsbury and Ipswich

Honorary Life Patrons

James Buckle DL

David Sheepshanks CBE DL

Vice Patrons

Lord Cunliffe

Dr Scilla Dyke MBE

Sir Christopher Howes

Christine Truman James MBE

**Lord & Lady Stevenson
of Coddendam**

Chair

George Vestey DL

Trustees

Jordan Holder

Anna Hughes

William Kendall DL

Louise Long

Jane Millar

Helen Taylor

Neil Walmsley

Gareth Wilson DL

Sarah Zins

Ambassador

Richard Cooper

Volunteer

Sarah Carr

Our Team

Hannah Bloom
Chief Executive

Nicki Bray
Grants Manager

James Brewer
Sizewell C Community Fund Grants Officer

Lesley Chandler
Executive Assistant

Olly Chaplin
Finance Officer

Tracey Fuller
Grants Officer

Clare Gibson
Grants Officer

Sarah Mortimer
Sizewell C Community Fund
Project Manager

Anna Norman-Butler
Communications Manager

Kate Paul
Special Projects

Lucy Pembroke
Campaigns Manager

Jess Prosser
Programmes Manager

Katie Read
Philanthropy Assistant

Julie Rose
Grants Officer

Charlotte Rowlands
Director of Finance & Operations

Anna Stogdon
Impact Manager

Annie Voller
Sizewell C Community Fund Grants Officer

Danielle Waller
Director of Grants & Impact

Fran Wright
Philanthropy Manager

If you need to speak to one of the team, please call us on 01473 602 602



The Suffolk Community Foundation team
(Absent: Lucy Pembroke)

What people say about us

Hear from the people who know us best: our supporters, partners, and those we've helped.

“As always Suffolk Community Foundation has been supportive of our group, and particularly the Pargiter Fund which has supported us each financial year with grants.

Additionally, we are particularly grateful when the Foundation identifies funders whom we may not have applied to, and directs grants to us which happened this financial year.

It is a fantastic service for voluntary charity groups such as ours where funding is so important.”

SECOND CHANCE STROKE GROUP

“SCF has been a wonderful support for innov8 as we have grown. Apart from introducing countless opportunities for funding, they have been a strong advocate and a great source of wisdom as we meet the challenges of growing and supporting the young people who come to innov8. In addition to many introductions to potential partners, funders and advisers, they have coached us through our fund applications to make sure we provide the information needed in an efficient and effective way.

We genuinely wouldn't have made the progress we have without their support.”

INNOV8

“Reflecting on legacy while clearing my late parents' home led me to SCF. My family and I have a strong belief in the power of education to give people skills and confidence to flourish and independently build their lives. However, if I tried to help people independently, how would I know that any money provided would actually be used in the way intended?

By setting up an endowment fund through SCF, there is an investment that provides grants every year to applicants who have been fully assessed and monitored. We get a real buzz seeing the work of the charities we support. We are giving more than money; we are giving opportunity.”

HILL FAMILY FUND

“Always a positive experience working with Suffolk Community Foundation! Thanks for all your support. You always go the extra mile, your correspondence is polite and friendly and you're incredibly knowledgeable.”

REACH COMMUNITY PROJECTS

How we've helped: Case studies part 5

CASE STUDY: Memories are Golden



Memories are Golden provides activities, entertainment and events to improve wellbeing, build friendships and reduce loneliness.

Its Hub brings people together, particularly older people at risk of social isolation and those living with dementia. It also offers respite for carers and families. **Memories are Golden received a grant of £4,212** from the Co-op Community Cares Fund to help pay for its day services for people in West Suffolk.

This safe, welcoming space has become a lifeline, offering companionship and security. Each week, Marg enjoys activities such as interactive games and craft projects, and shares a nutritious two-course hot meal with friends.

Marg values the friendships she has built at Memories are Golden saying the staff "make me feel truly cared for." Entertainment, special day trips, and personalised scrapbooks add richness and meaning to her routine, helping her reflect on cherished memories. The Hub has not only filled her days with activity but given her a sense of belonging and joy, fundamentally changing her experience of ageing by reducing isolation and creating community:

"It's made such a difference — I feel part of something again."

CASE STUDY: Eden's Project



Eden's Project is a youth charity which since 1999 has supported over 2,500 young people through mentoring, safe youth sessions and positive opportunities.

It helps young people facing emotional challenges like bullying, anxiety, family conflict, disabilities and learning needs. **Eden's Project received a range of grants to support its Youth Centre, totalling nearly £13,000**, including from Maurken, a private fund, East of England Co-op Community Cares, High Sheriff's, Women & Girls' and Suffolk Giving Funds.

Eden's Youth Centre is a place where young people can find the help and support they need to improve their wellbeing and prospects. Nella, a teenager has been supported by Eden's youth through her time of:

"...struggles, tears and my mistakes. I felt so special and recognised by their words".

Nella had a very difficult homelife and had been engaging in risky and reckless behaviour. However, the support and guidance she had received at Eden's has made a huge difference to her, she is looking after herself better and has vastly improved self-worth. She has made friends, has a much stronger support network now and is much more positive about her life and prospects.

Her sister, who is also supported at Eden's said,

"Growing up, I wasn't the best version of myself, I was a child with many struggles and no support alongside them. Eventually, I had dug myself a hole so deep within my mind, I knew I needed to reach out for help."

Supporting local lives:
Felixstowe Lawn Tennis Club



69%

of all grant applications
received in 2024/25 were
successful. **Our average
grant size was £4,546.**

TOGETHER WE SUPPORT:
SAX Community Fest



SUFFOLK
Community
Foundation

Suffolk Community Foundation

The Old Barns
Peninsula Business Centre
Wherstead, Ipswich
Suffolk IP9 2BB

T: 01473 602 602 E: info@suffolkcf.org.uk

Company limited by guarantee. Registered in England
registration No: 5369725. Charity No 1109453

Suffolk Community Foundation is a member
of the UK Community Foundations

suffolkcf.org.uk



UKCF
MEMBER



Registered with
FUNDRAISING
REGULATOR

Designed by: carolineoanes.co.uk

Featuring photography by: simplycphotography.co.uk

Printed by Leiston Press

With special thanks to Rathbones for supporting
the design and printing of this publication

*All names have been changed in case studies and quotes
to protect the identity of the individual(s) concerned.*

 **RATHBONES**

Look ahead to the future you want.

We can help you get more out of your money, so
you can get more out of life. For further information,
please contact Mark Winchester on 01223 229 229
or email mark.winchester@rathbones.com

rathbones.com

Invest well. Live well.

The value of investments and the income from them may go down as well as up and you may not get
back what you originally invested.

Rathbones is a trading name of Rathbones Investment Management Limited, which is authorised by the Prudential Regulation
Authority and regulated by the Financial Conduct Authority and the Prudential Regulation Authority. Registered office: Port of
Liverpool Building, Pier Head, Liverpool L3 1NW. Registered in England No. 01448919

